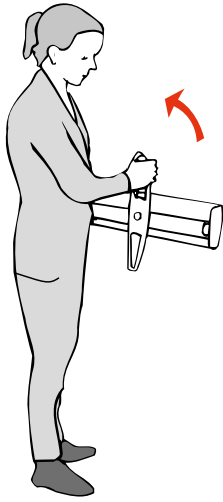
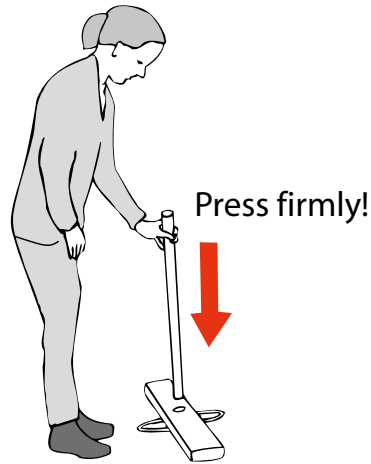


Expand LinkWall

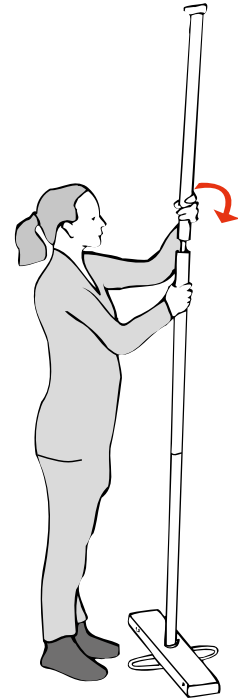
Aufbauanleitung · assembly instruction



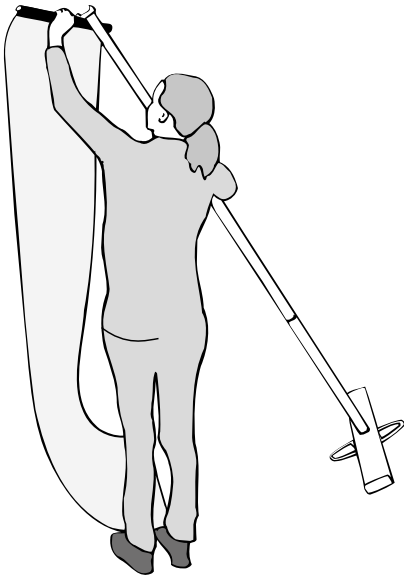
1



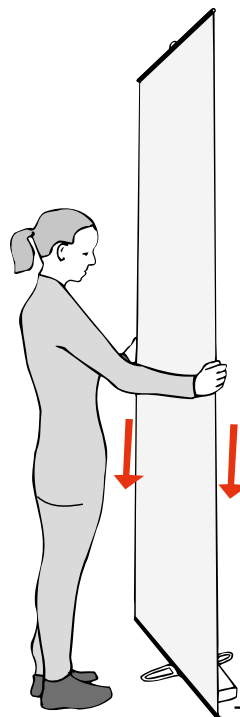
2



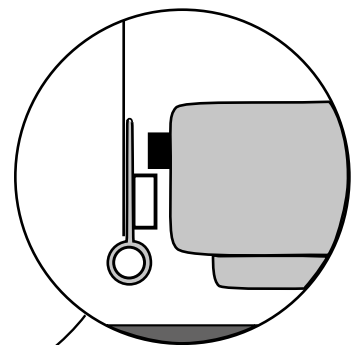
3



4



5



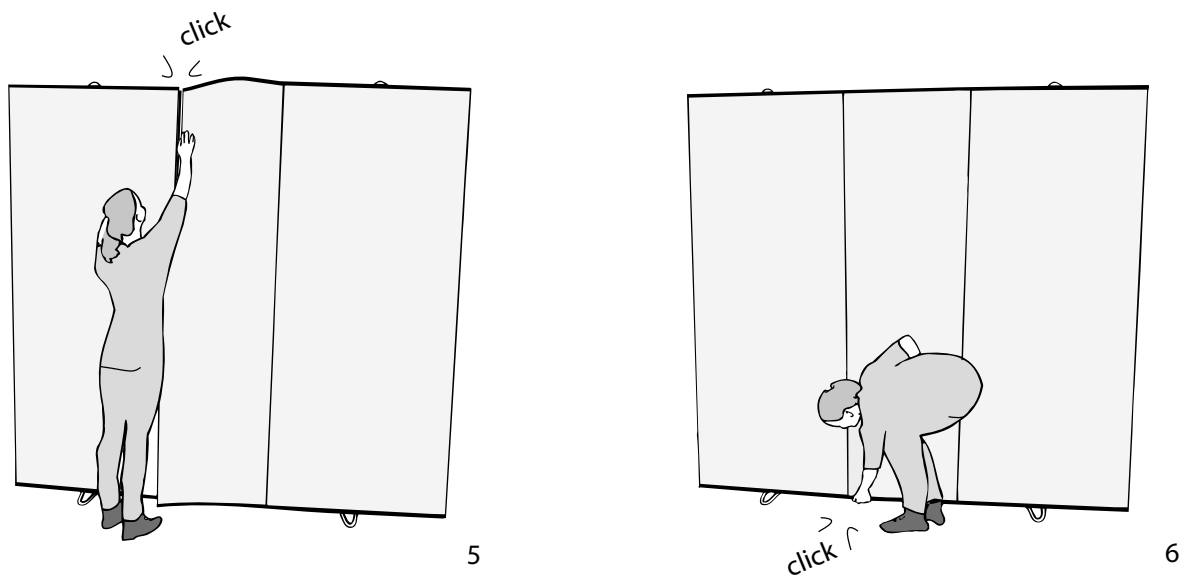
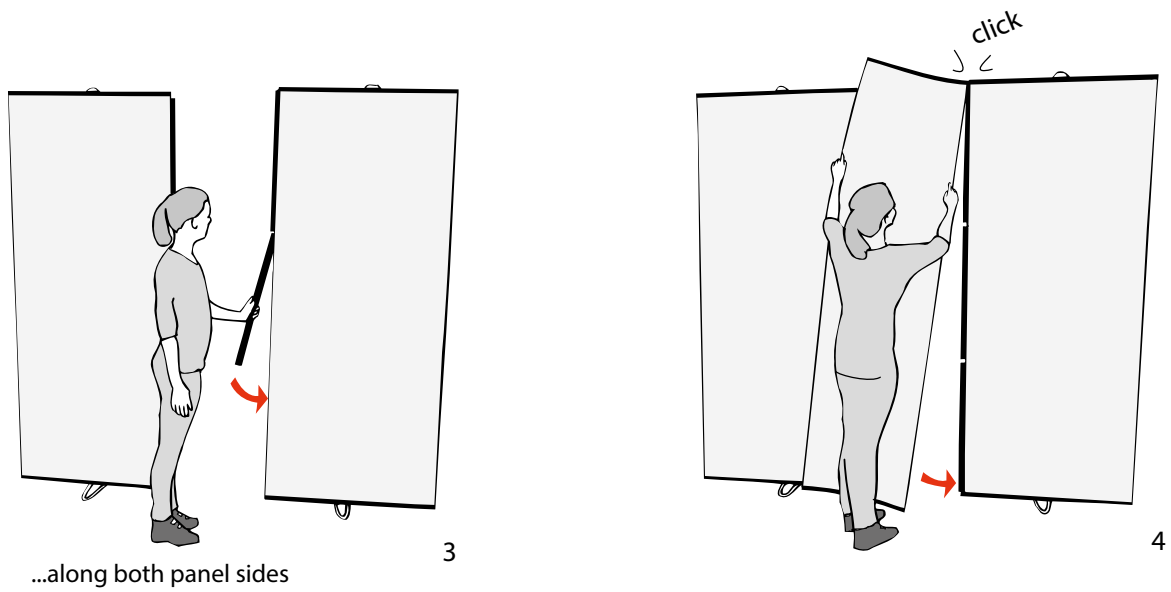
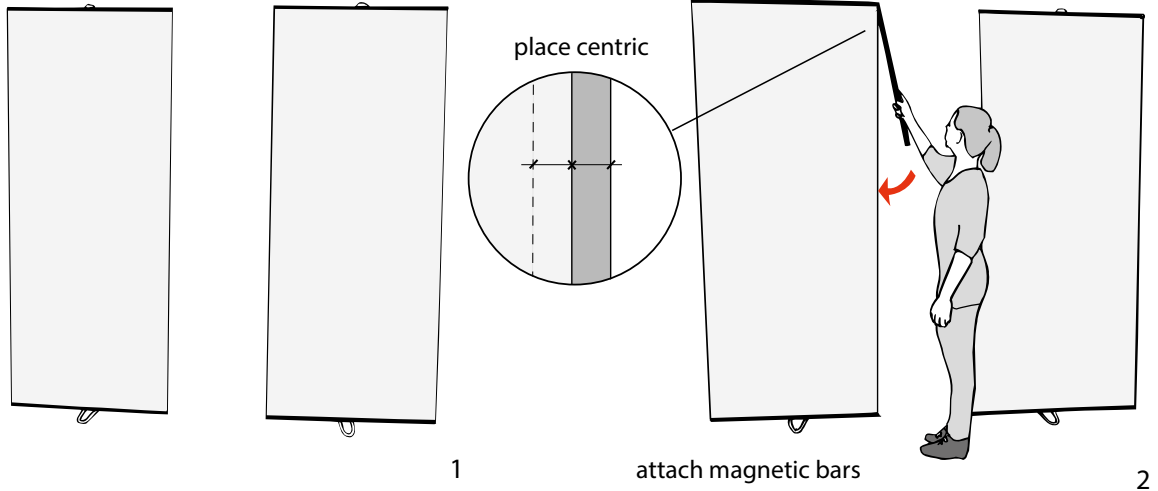
Magnetic lock

click

Expand LinkWall

Aufbauanleitung · assembly instruction

mit flexiblem Verbindungspanel · with flexible link panel

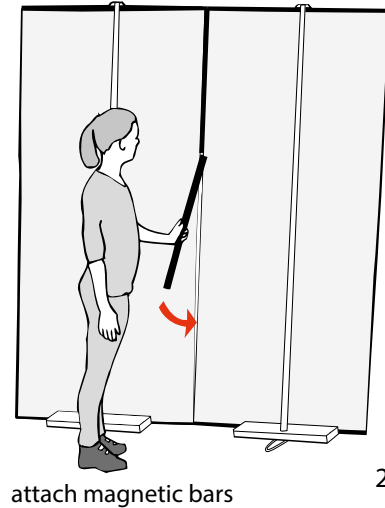
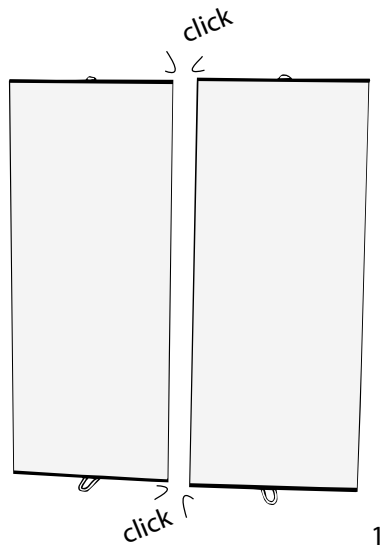


für eine höhere Version wird eine Leiter empfohlen · for taller versions a ladder is recommended

Expand LinkWall

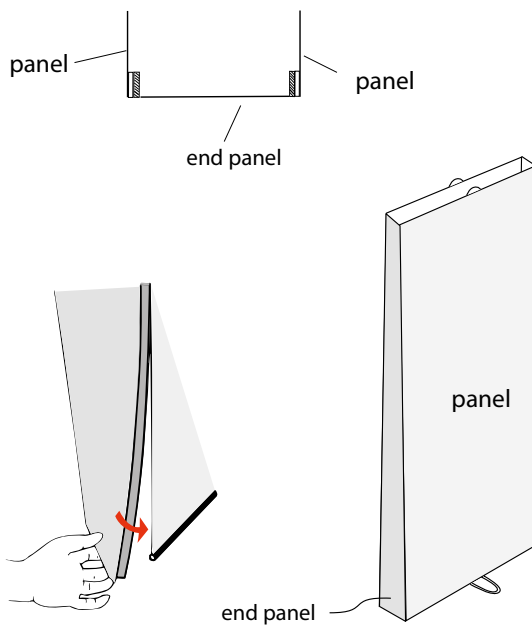
Aufbauanleitung · assembly instruction

ohne flexibles Verbindungspanel · without flexible link panel

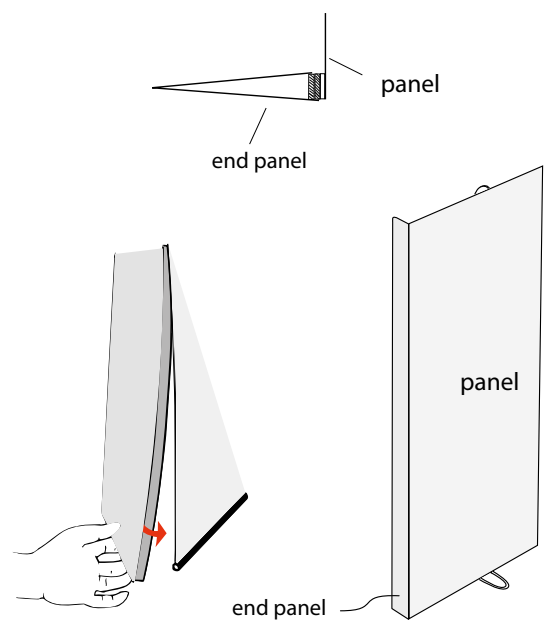


How to attach end panel

for double sided unit

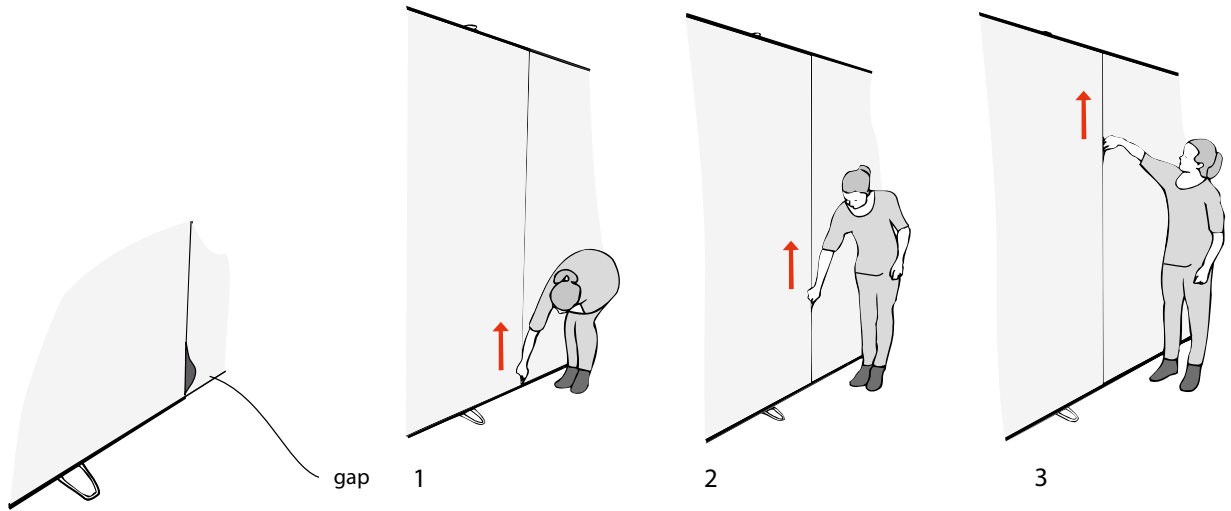


for single sided unit



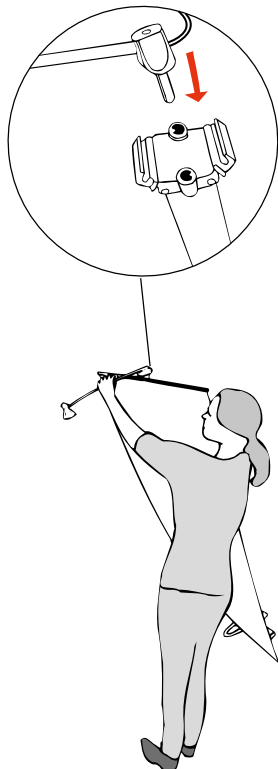
für eine höhere Version wird eine Leiter empfohlen · for taller versions a ladder is recommended

How to align graphics



Attaching spotlights

Expand Spotlight 50W



Expand Spotlight 150W/LED

