

ALU STAR Door

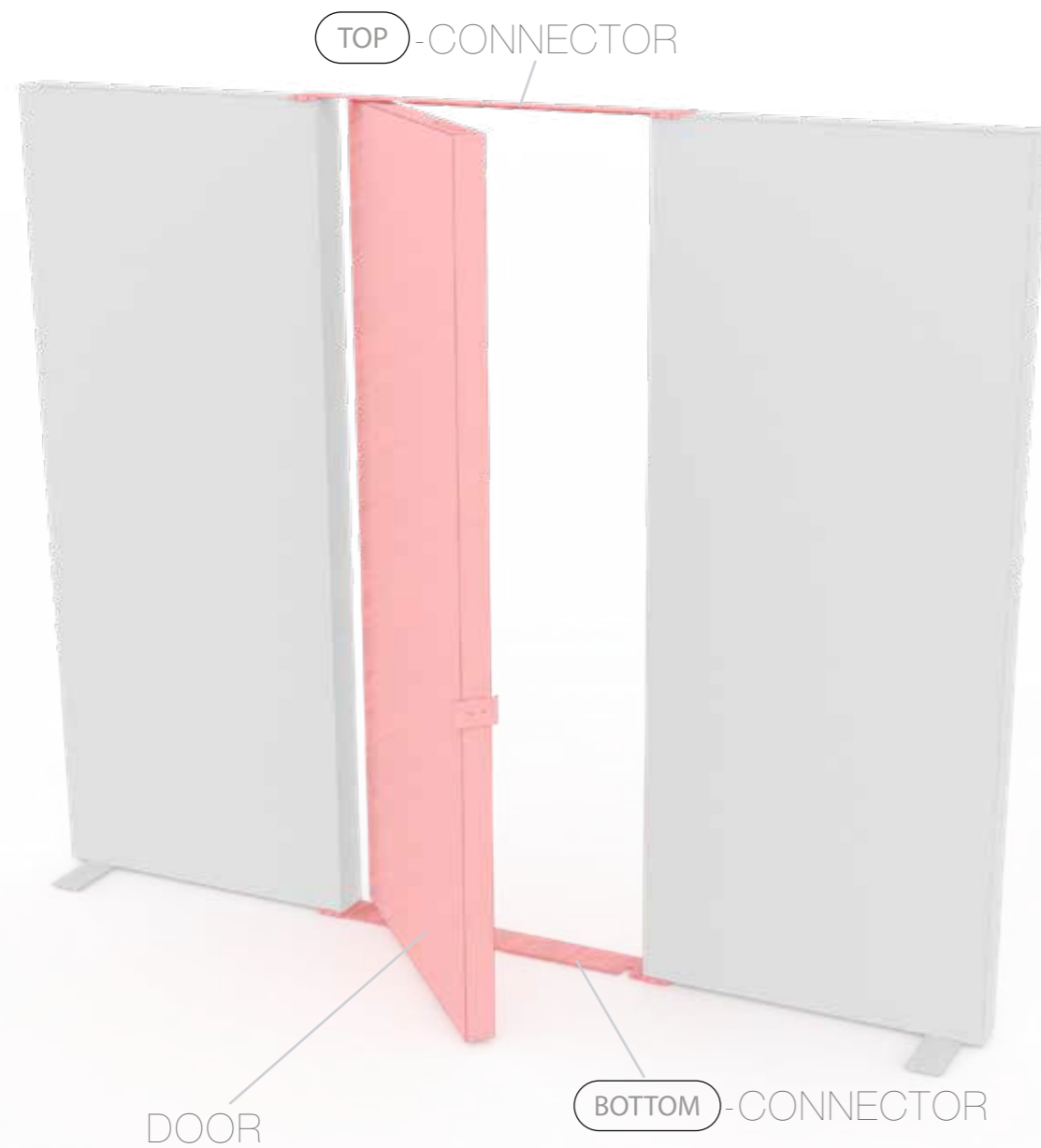
AUFBAUANLEITUNG



MARTINCOLOR
BILDKOMMUNIKATION



SET UP INSTRUCTION



Straight variant 4
set up instruction

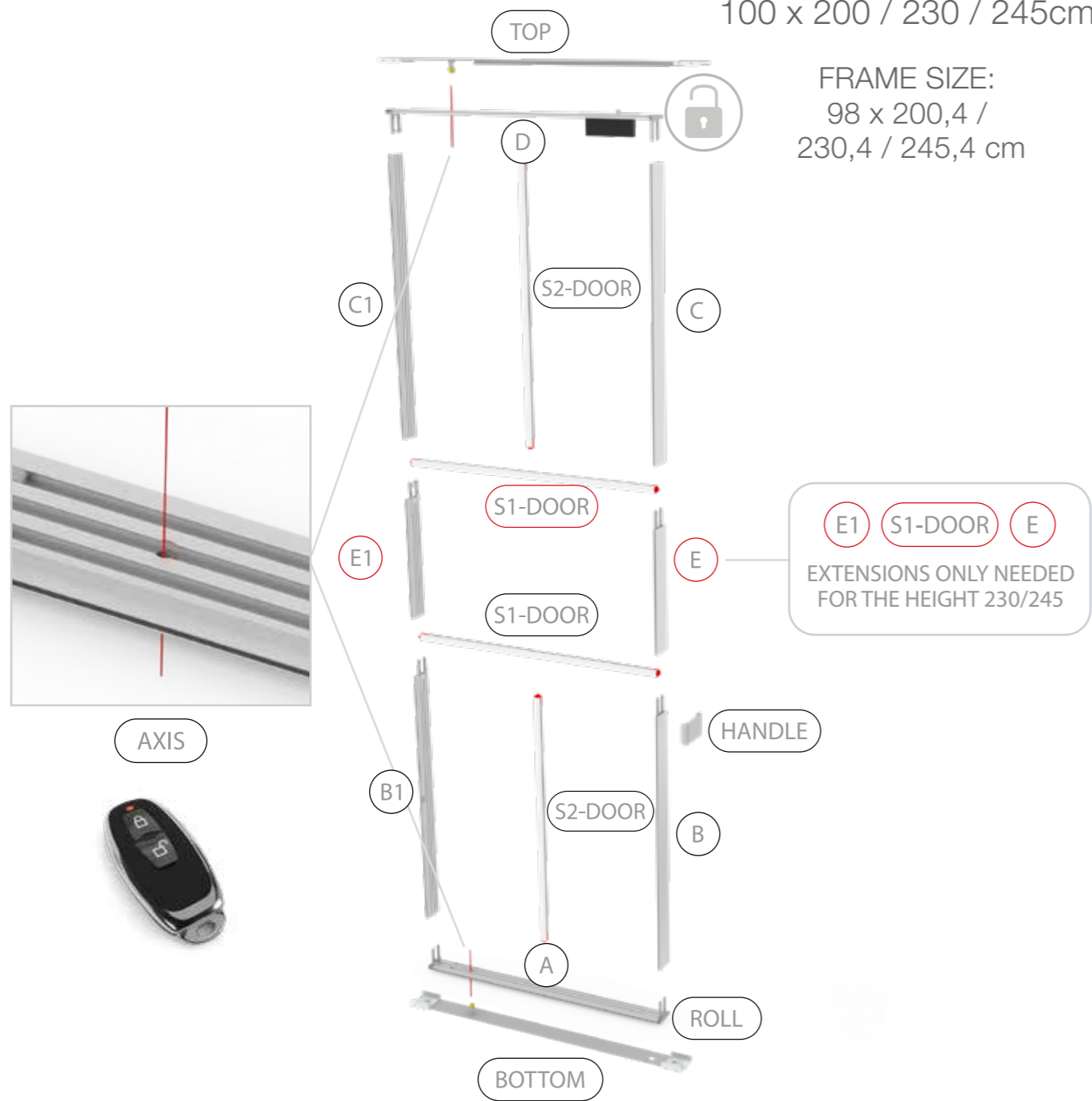


Corner and bunk variant 30
set up instruction



100 x 200 / 230 / 245cm

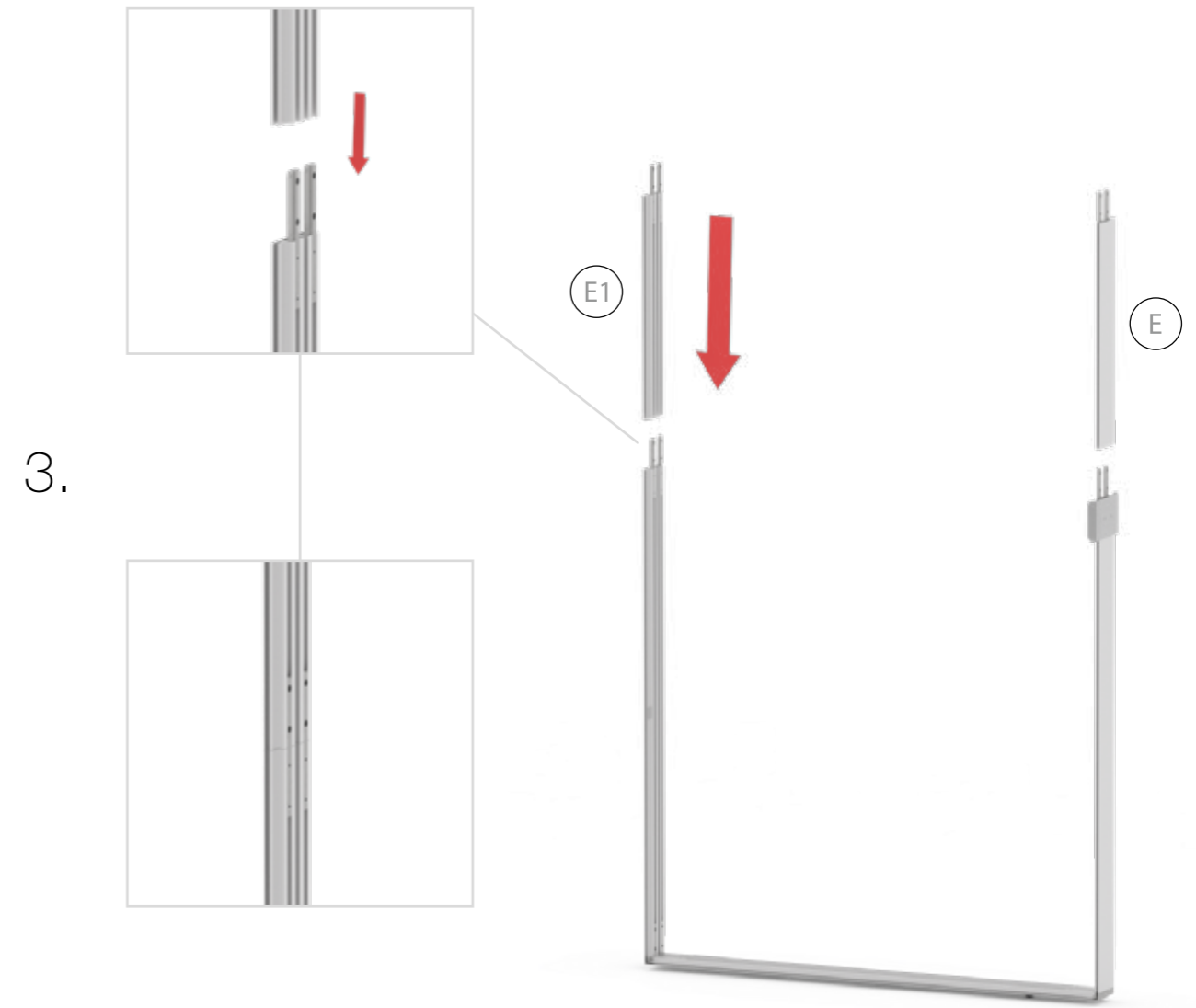
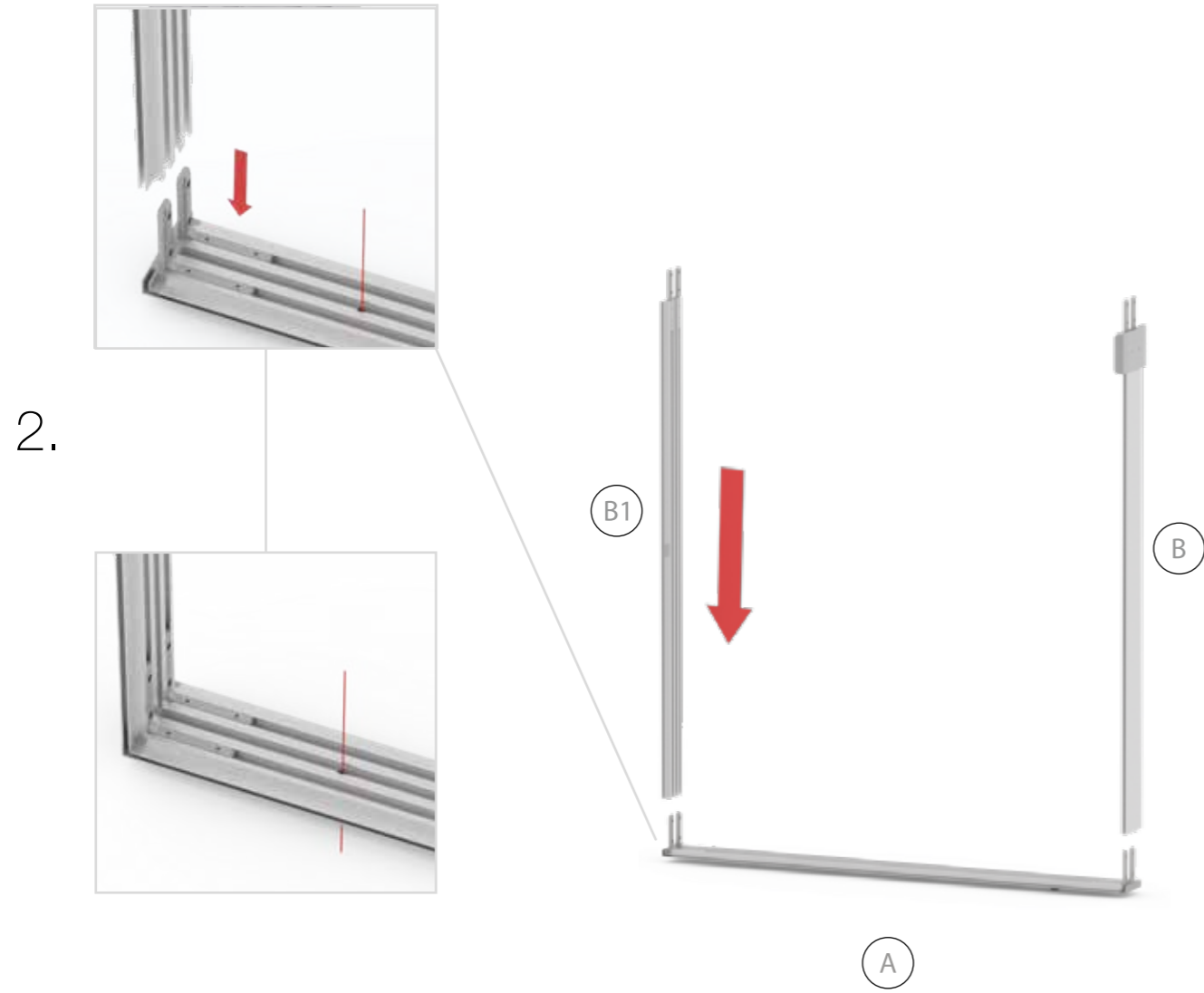
FRAME SIZE:
98 x 200,4 /
230,4 / 245,4 cm



1.

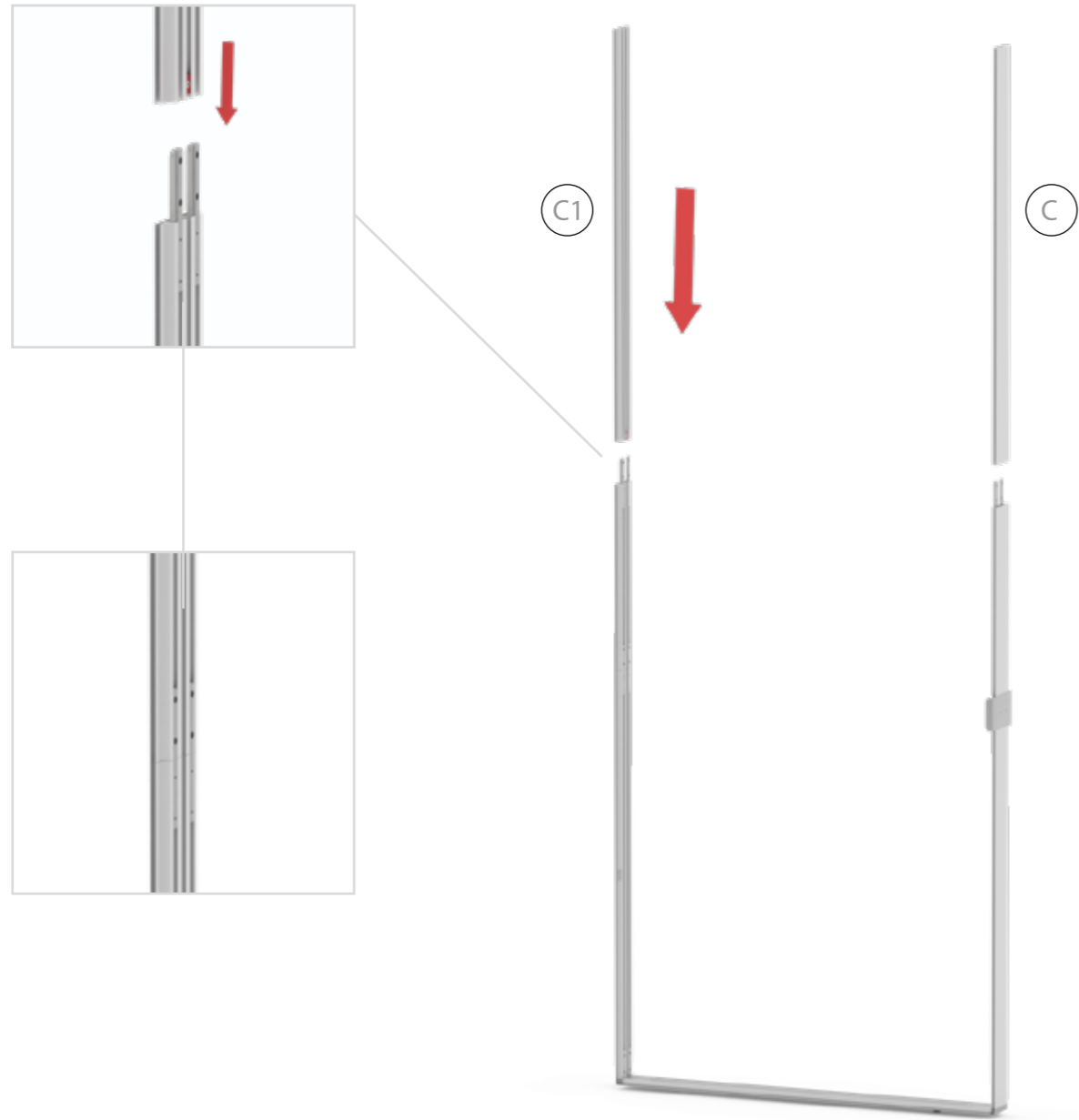


DOOR

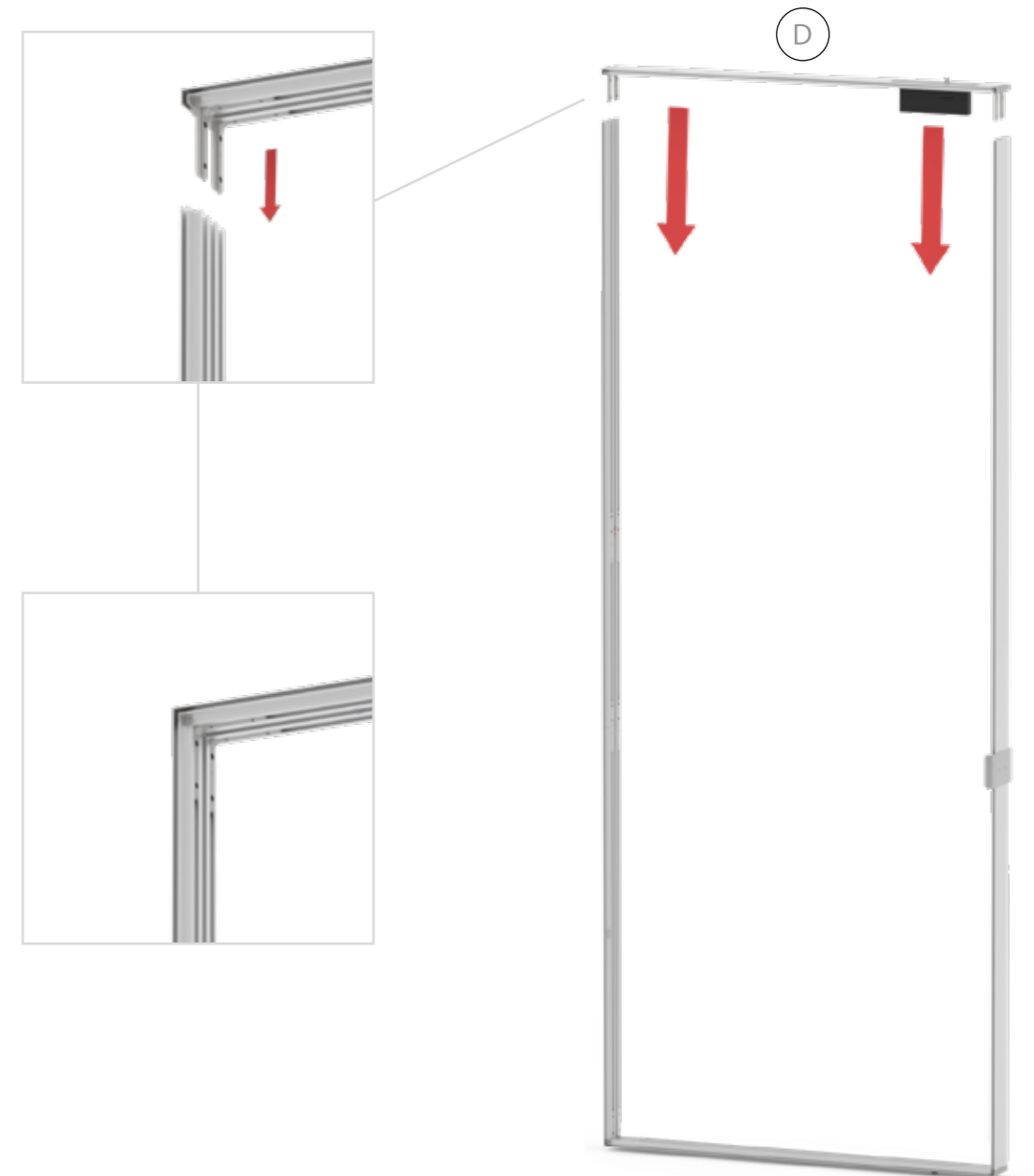


DOOR

4.

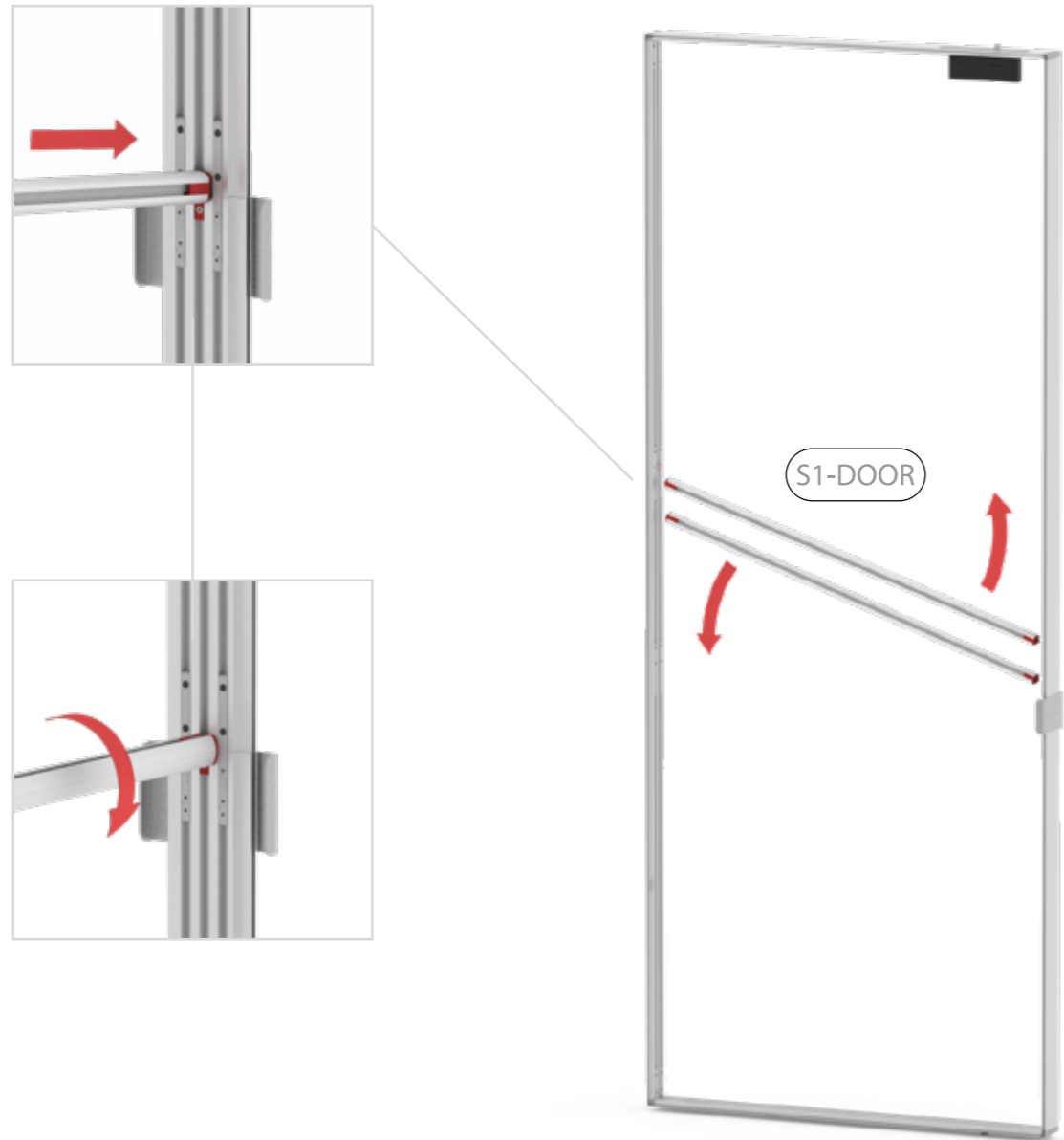


5.

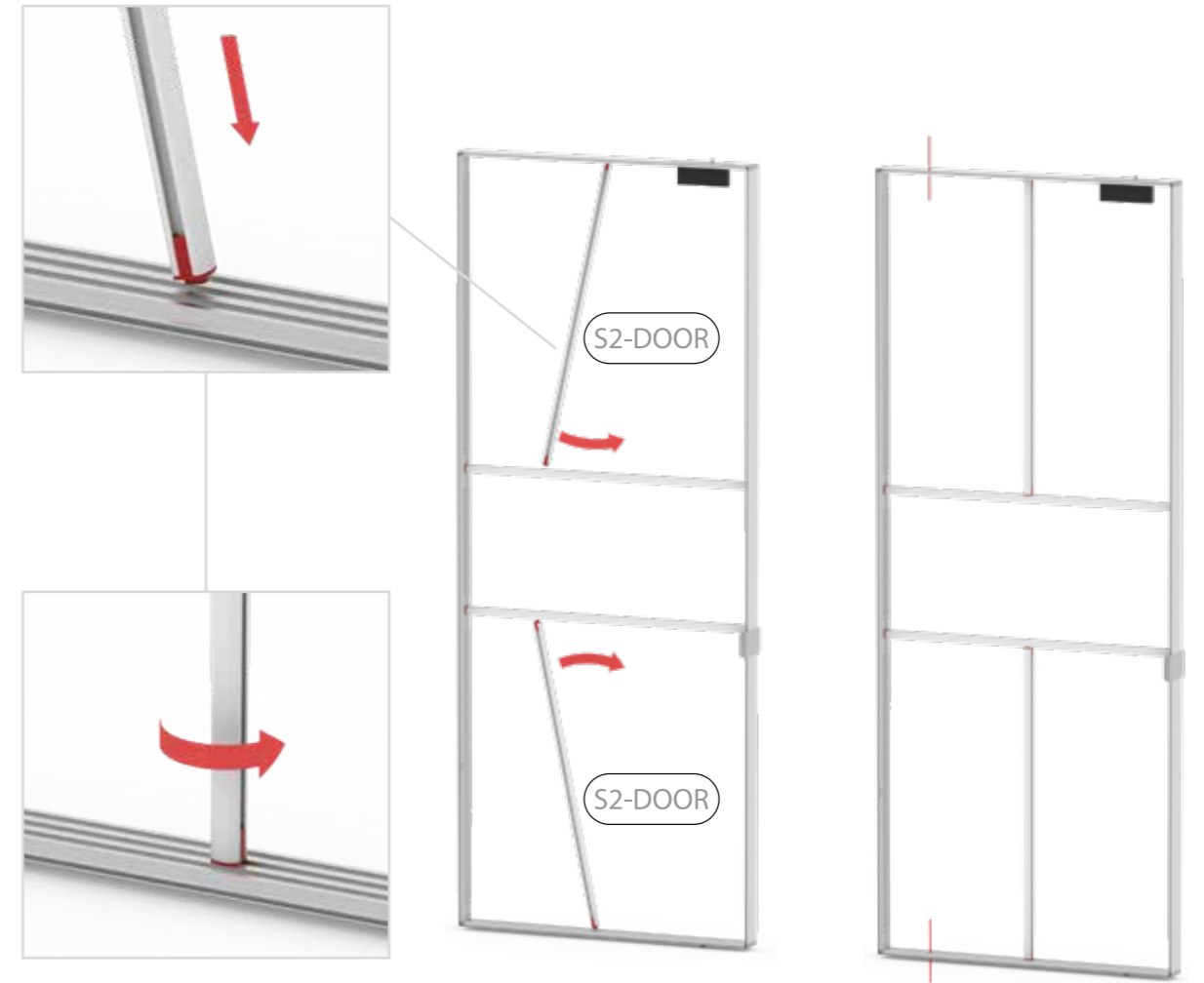


DOOR

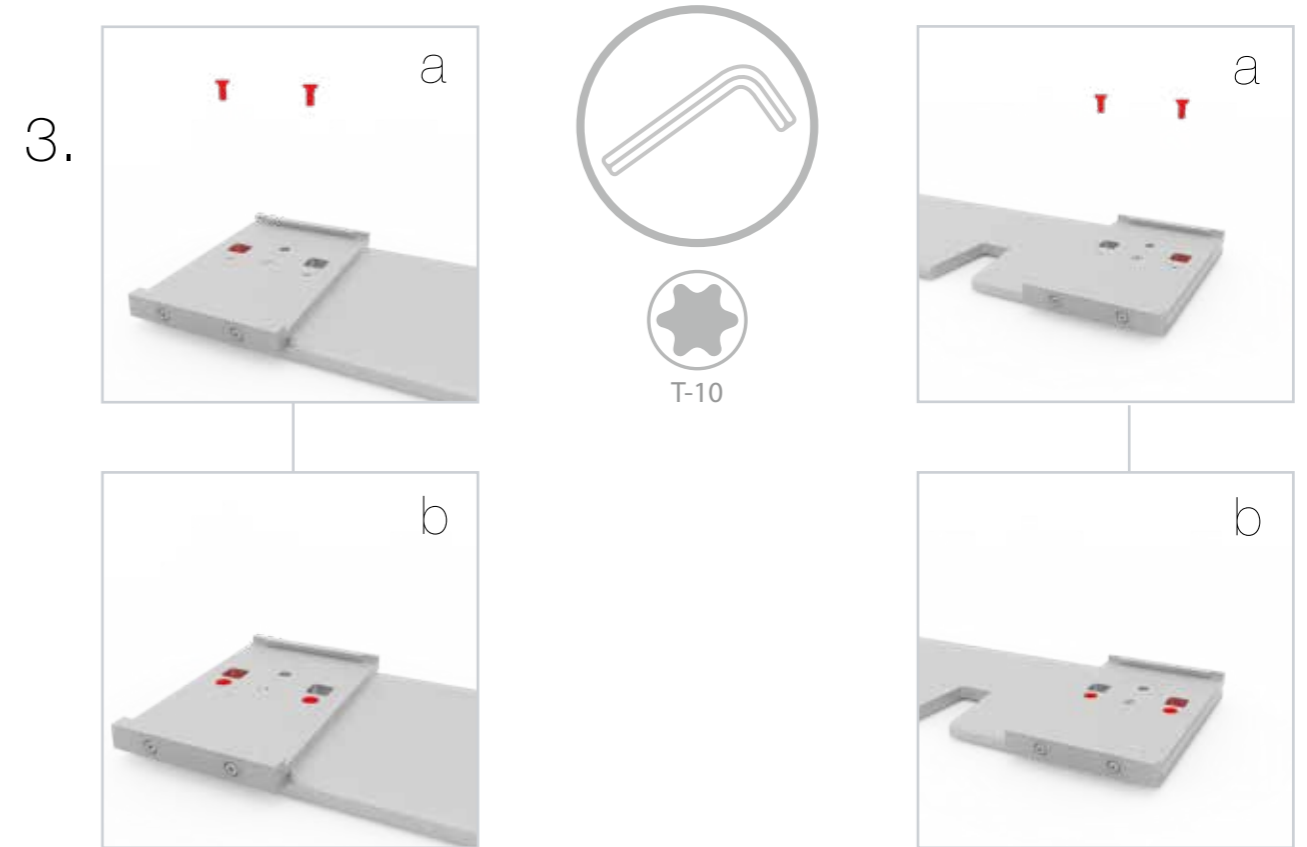
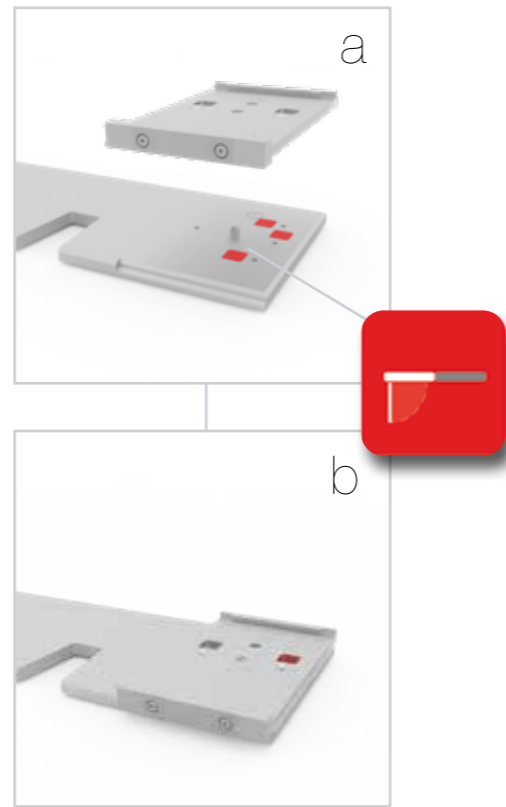
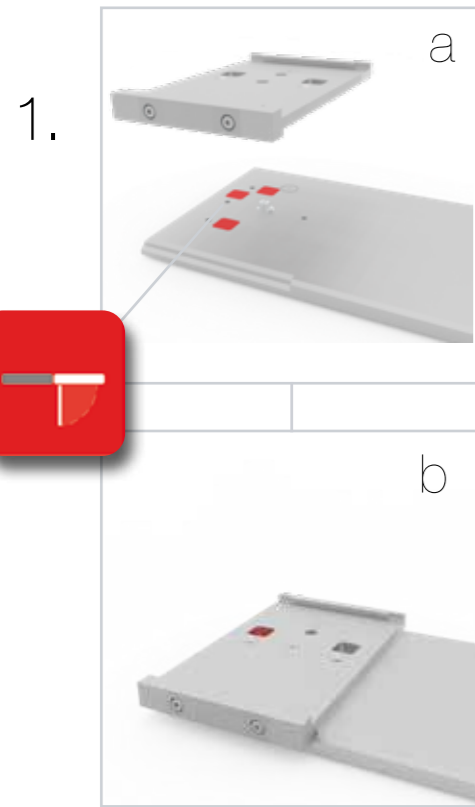
6.



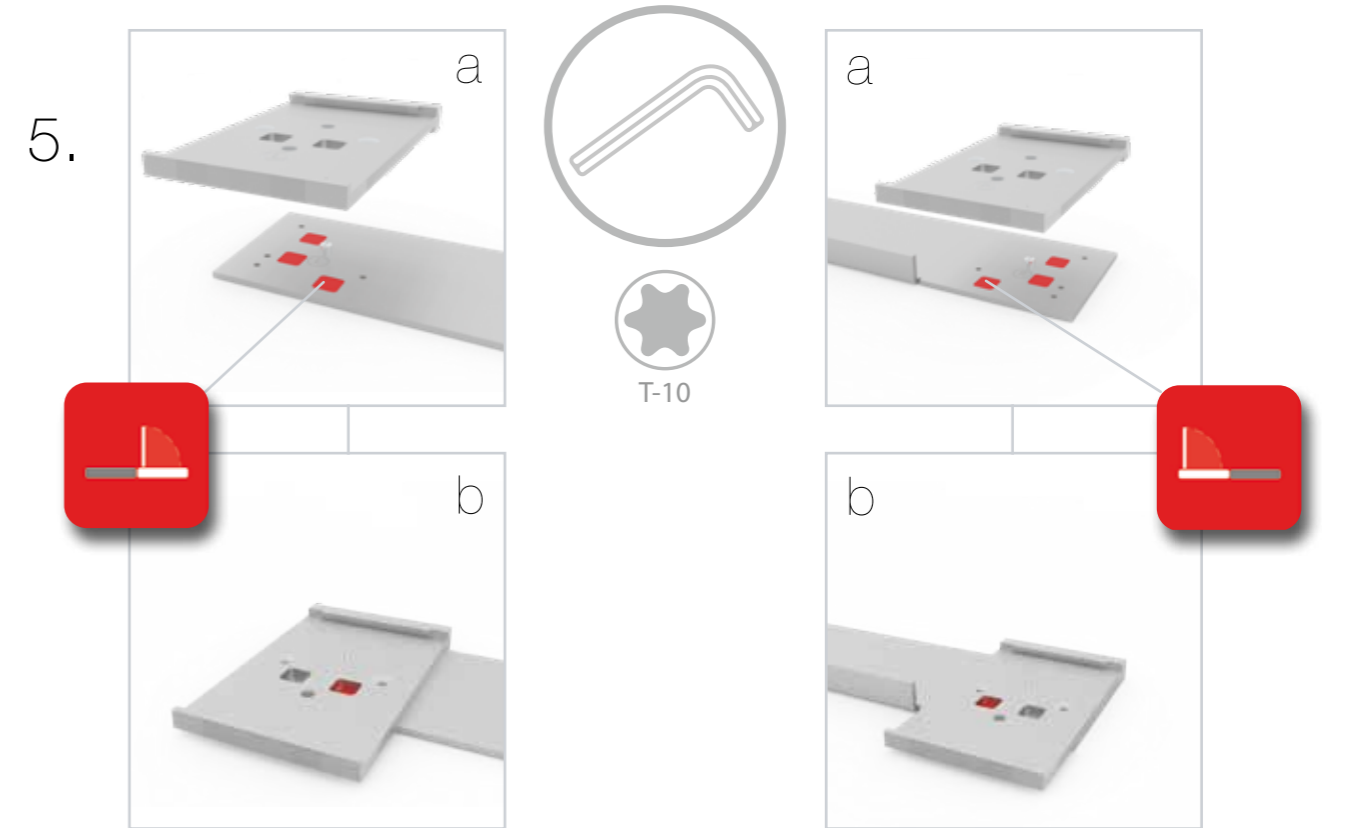
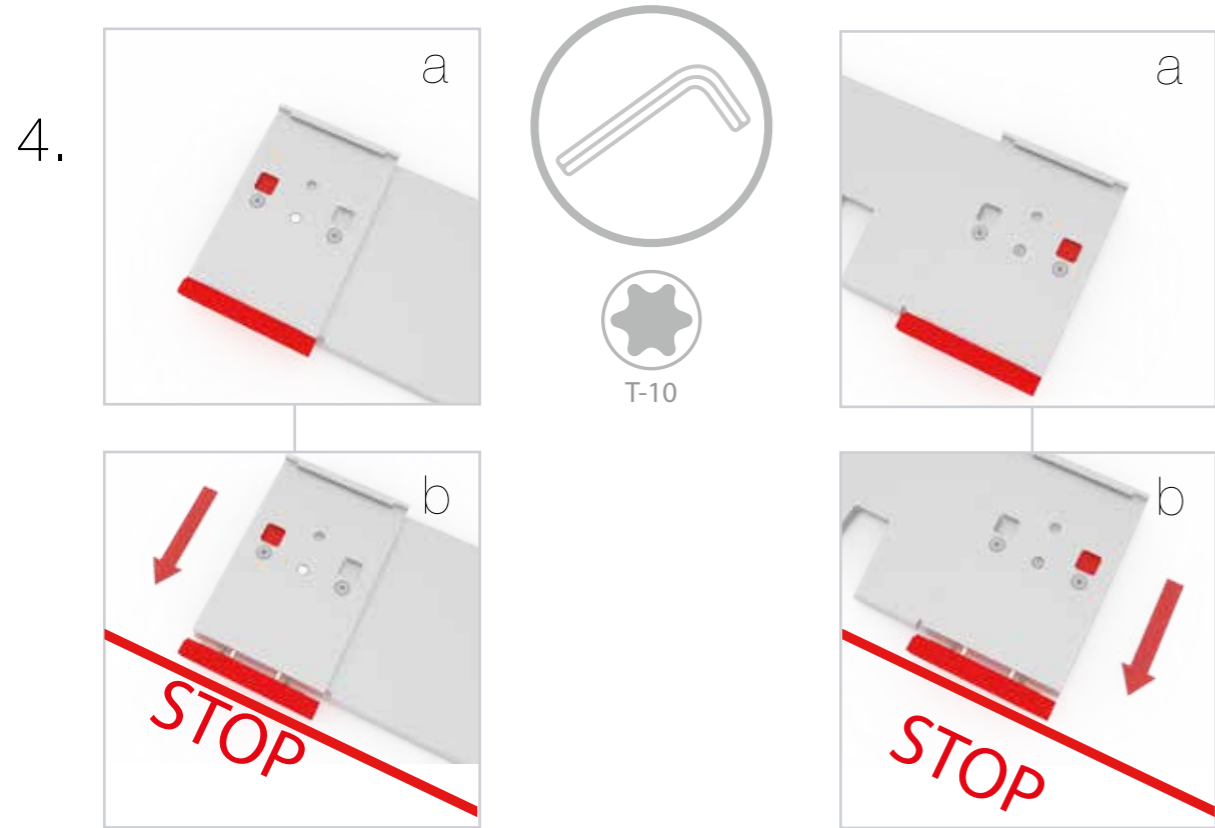
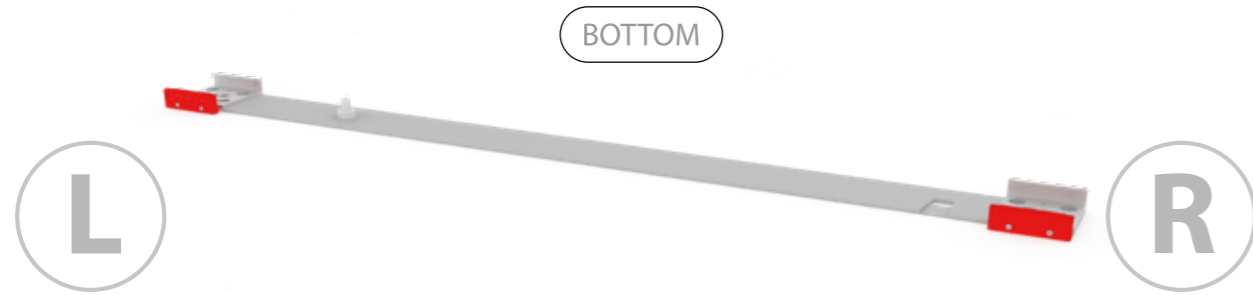
7.



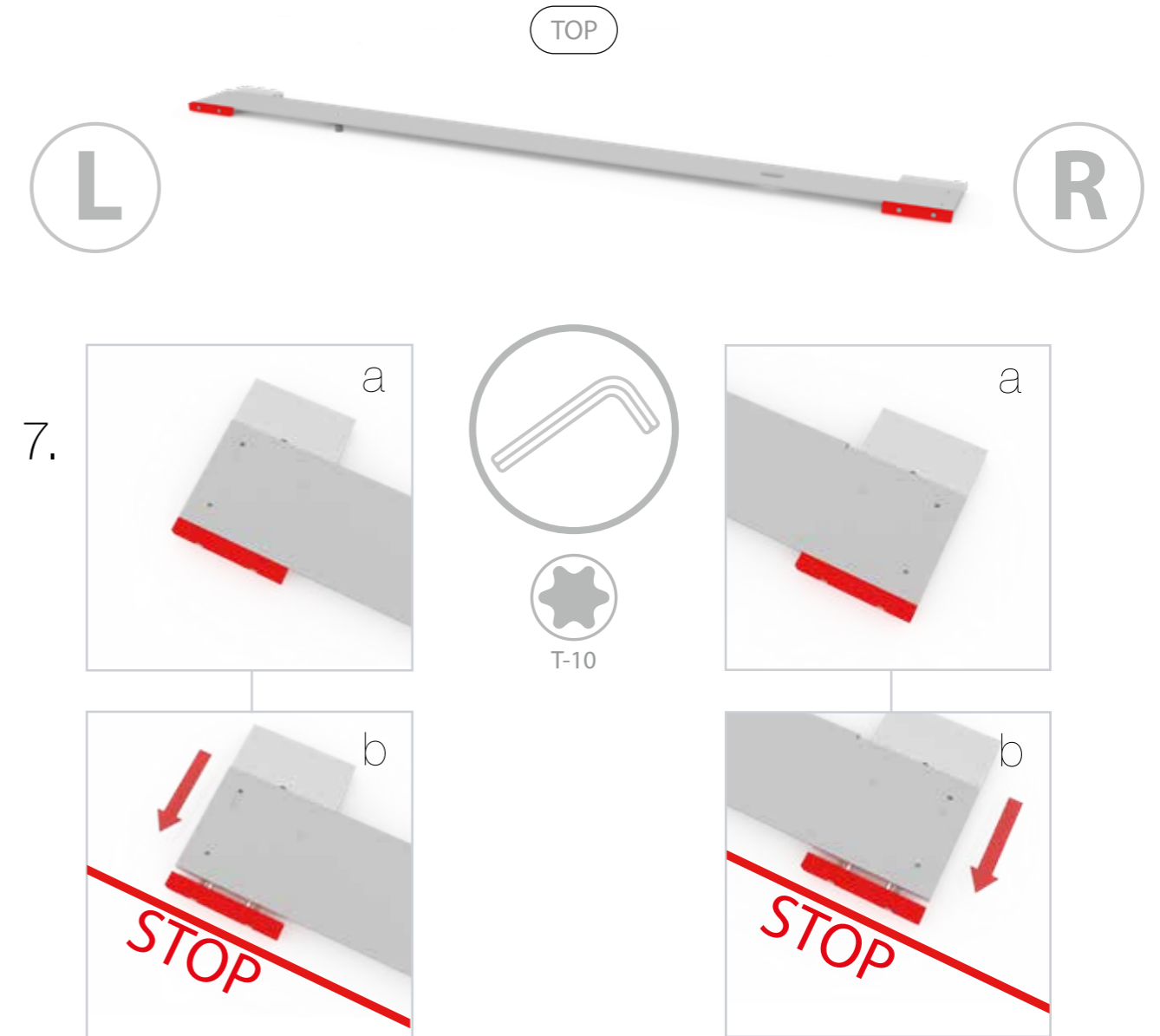
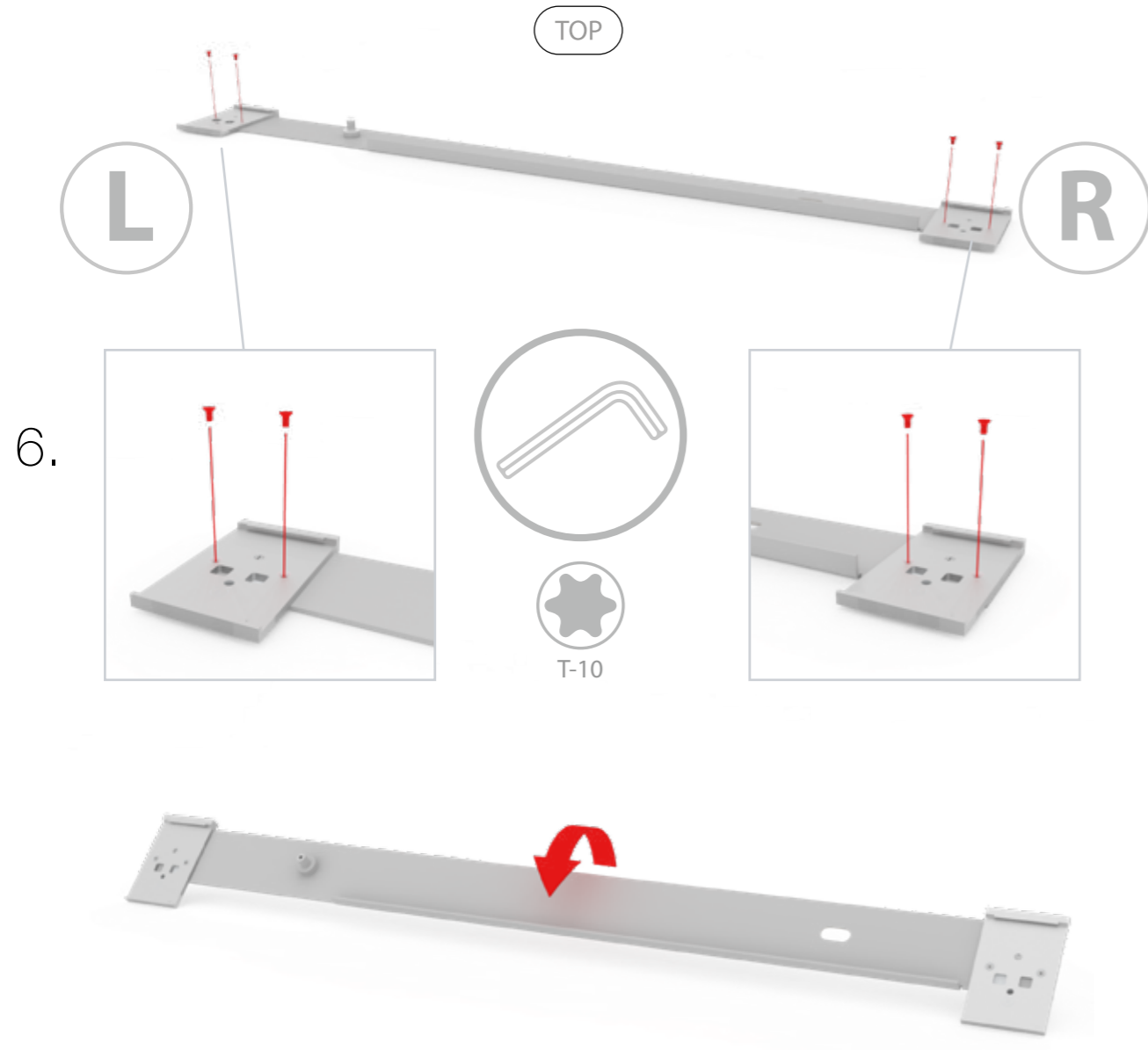
STRAIGHT VARIANT



STRAIGHT VARIANT

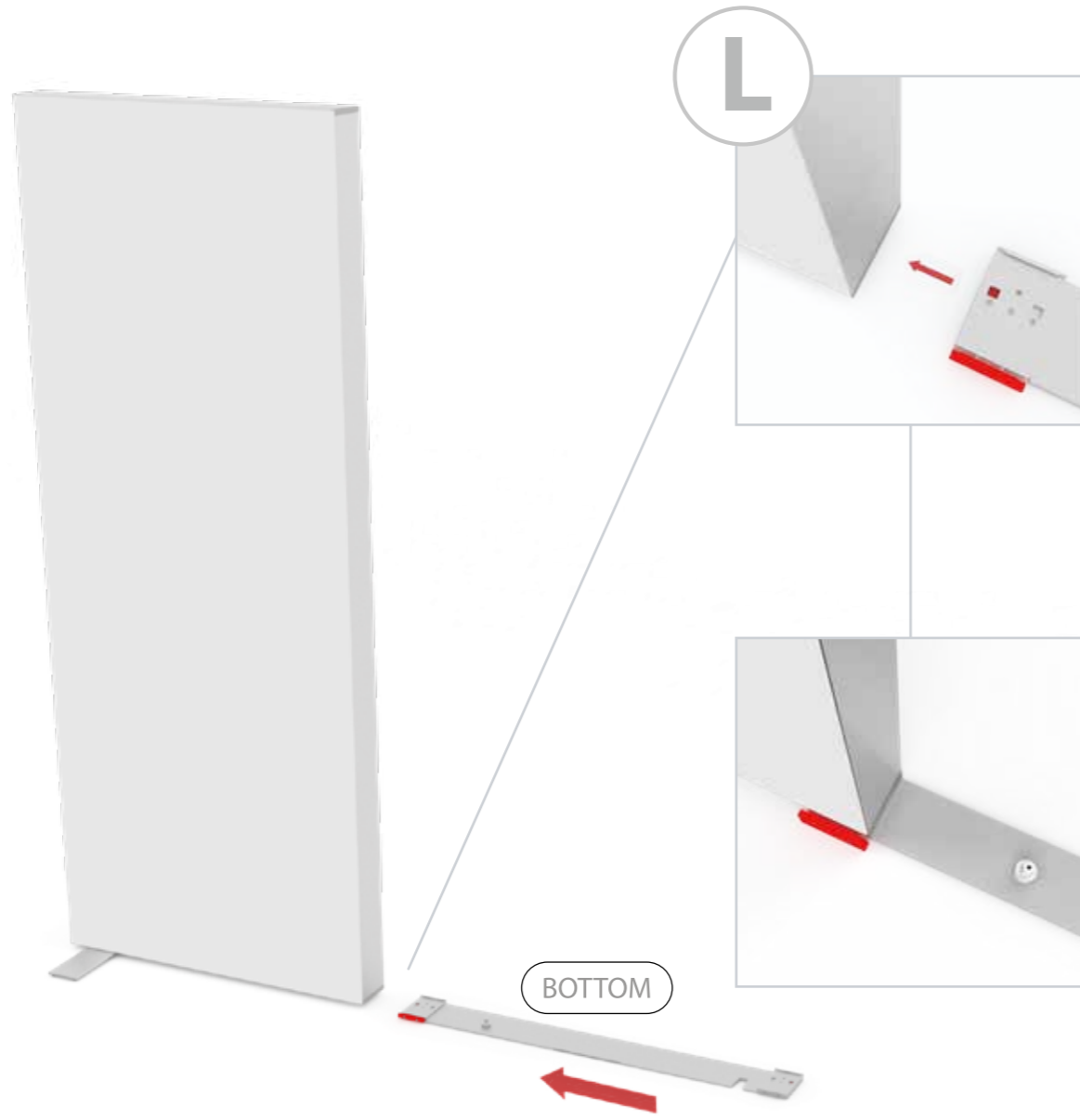


STRAIGHT VARIANT

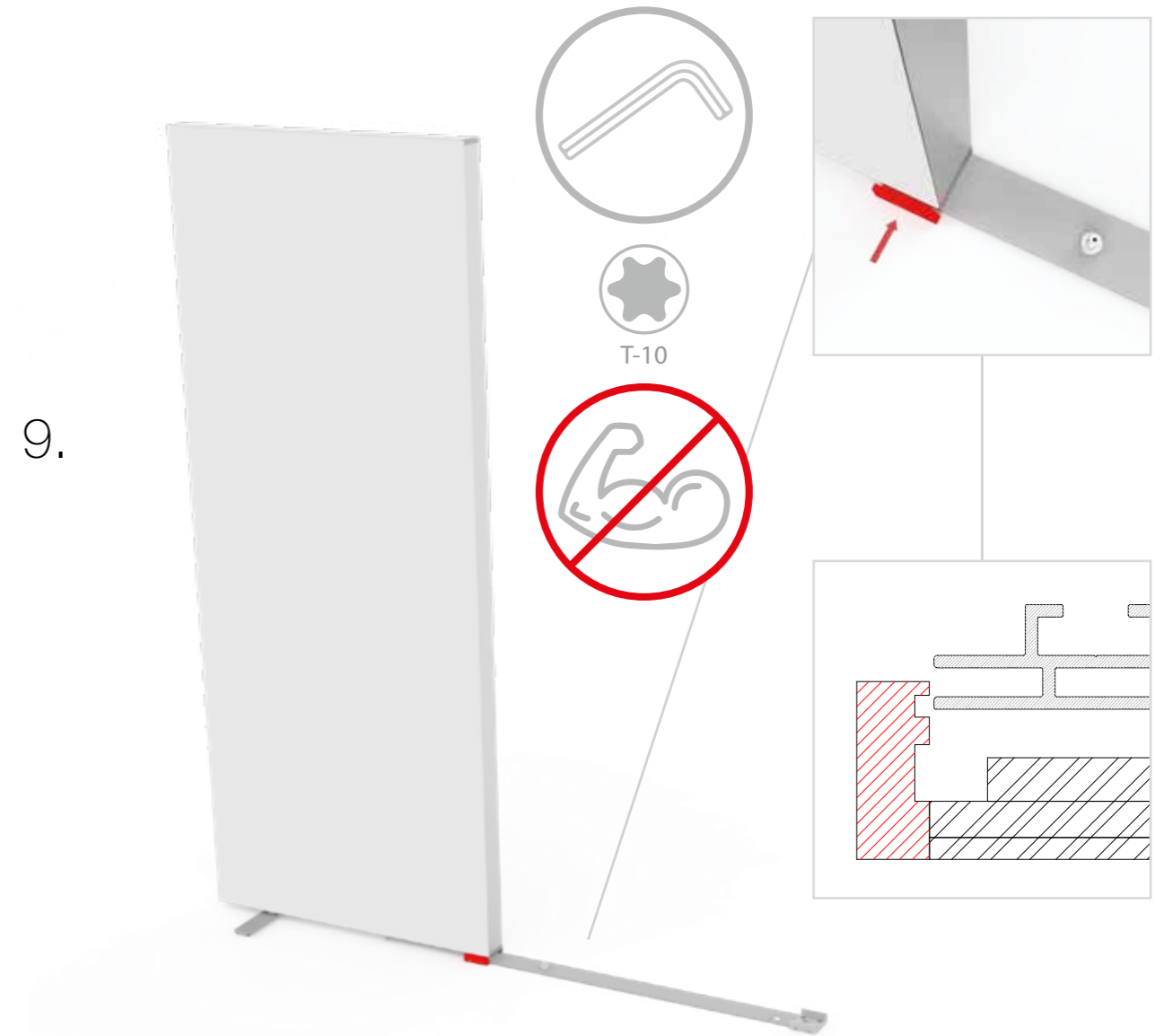


STRAIGHT VARIANT

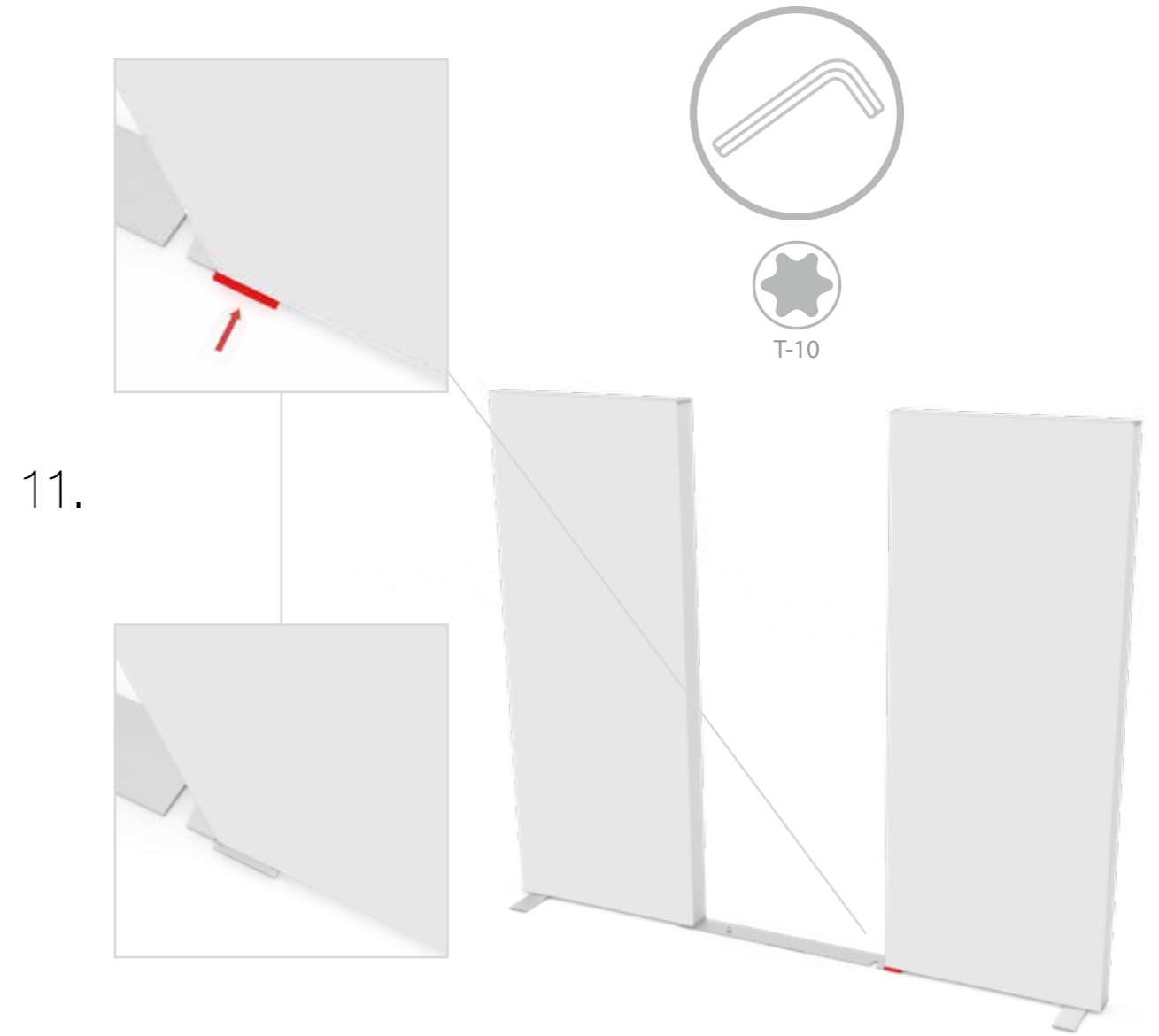
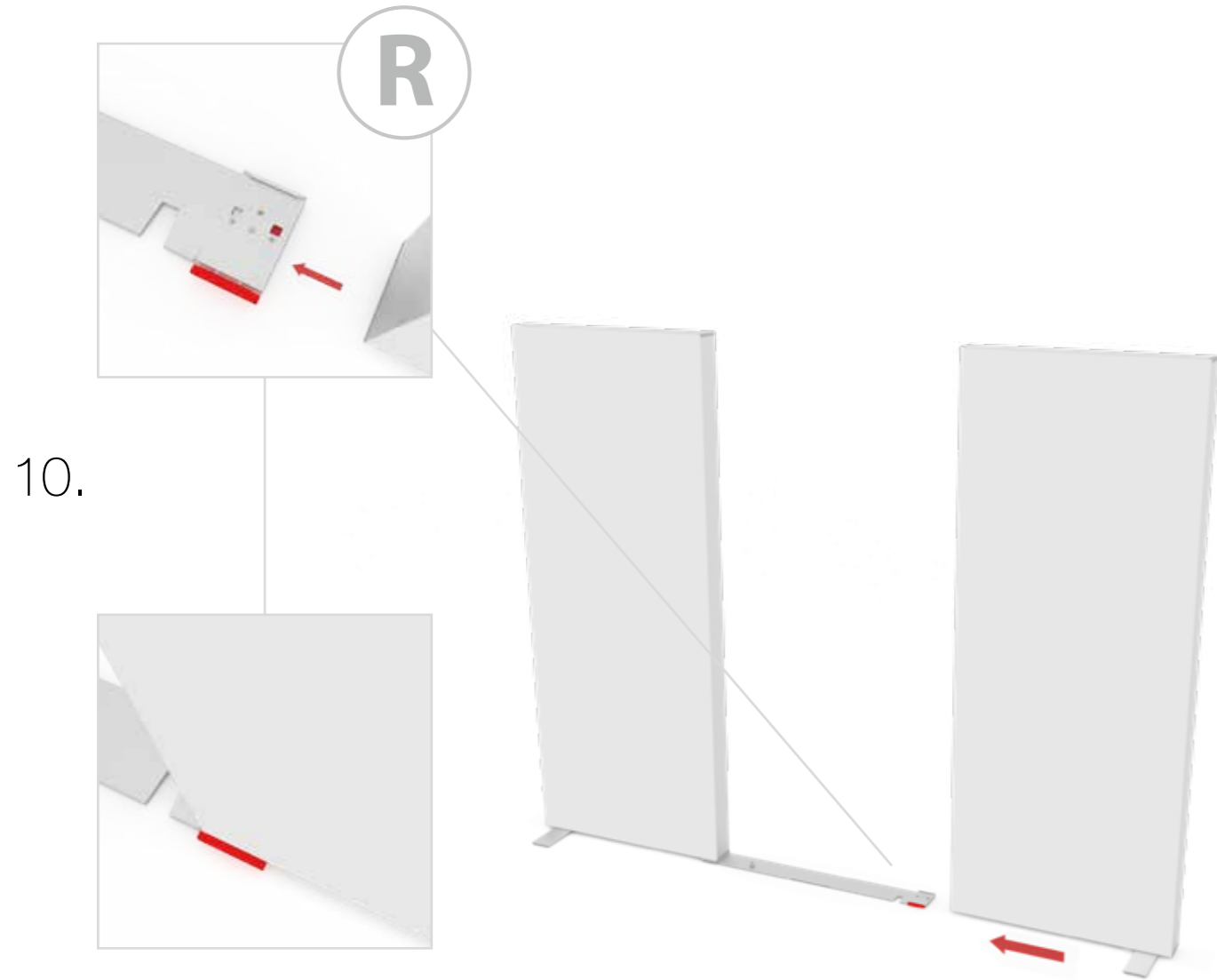
8.



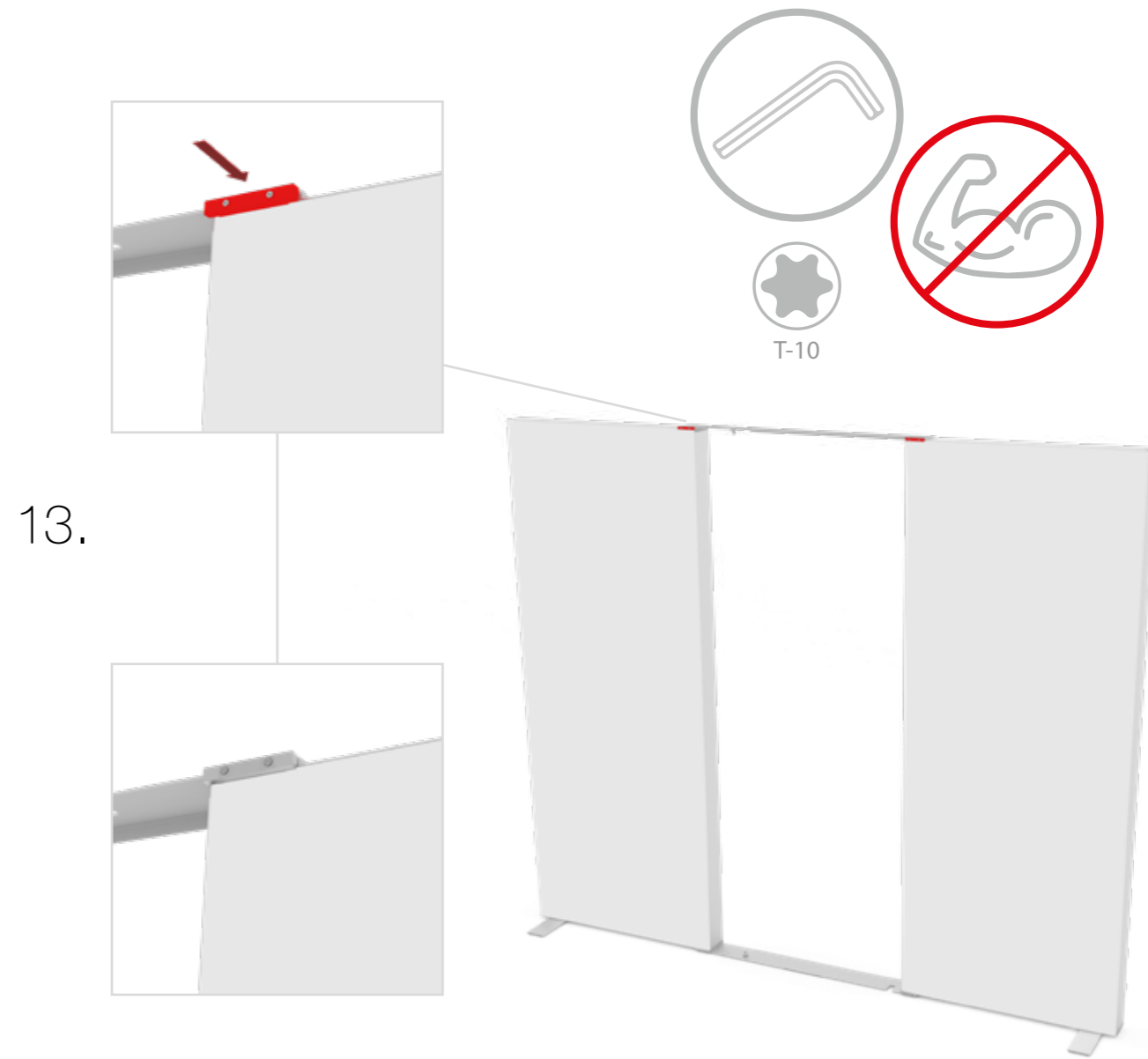
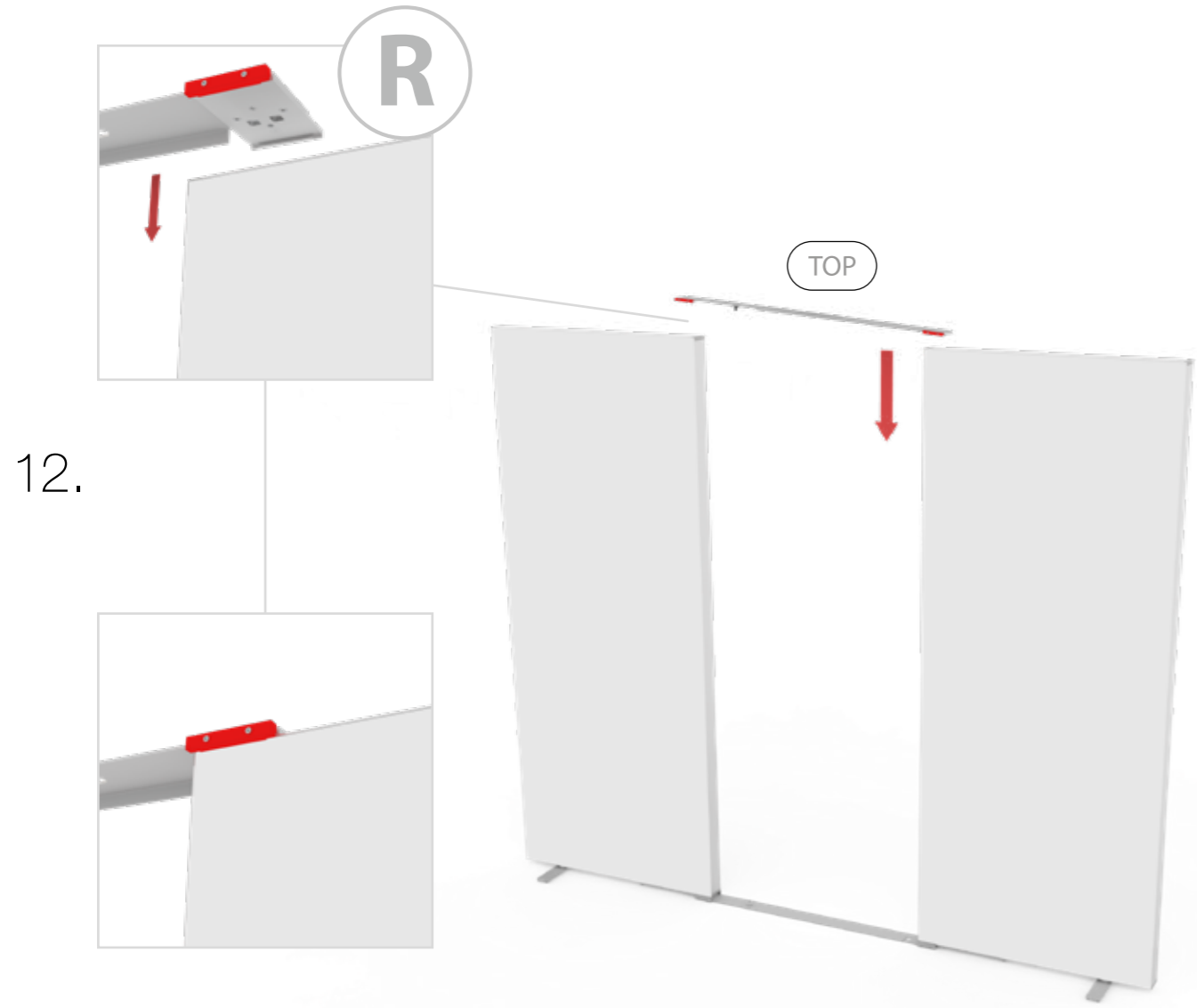
9.



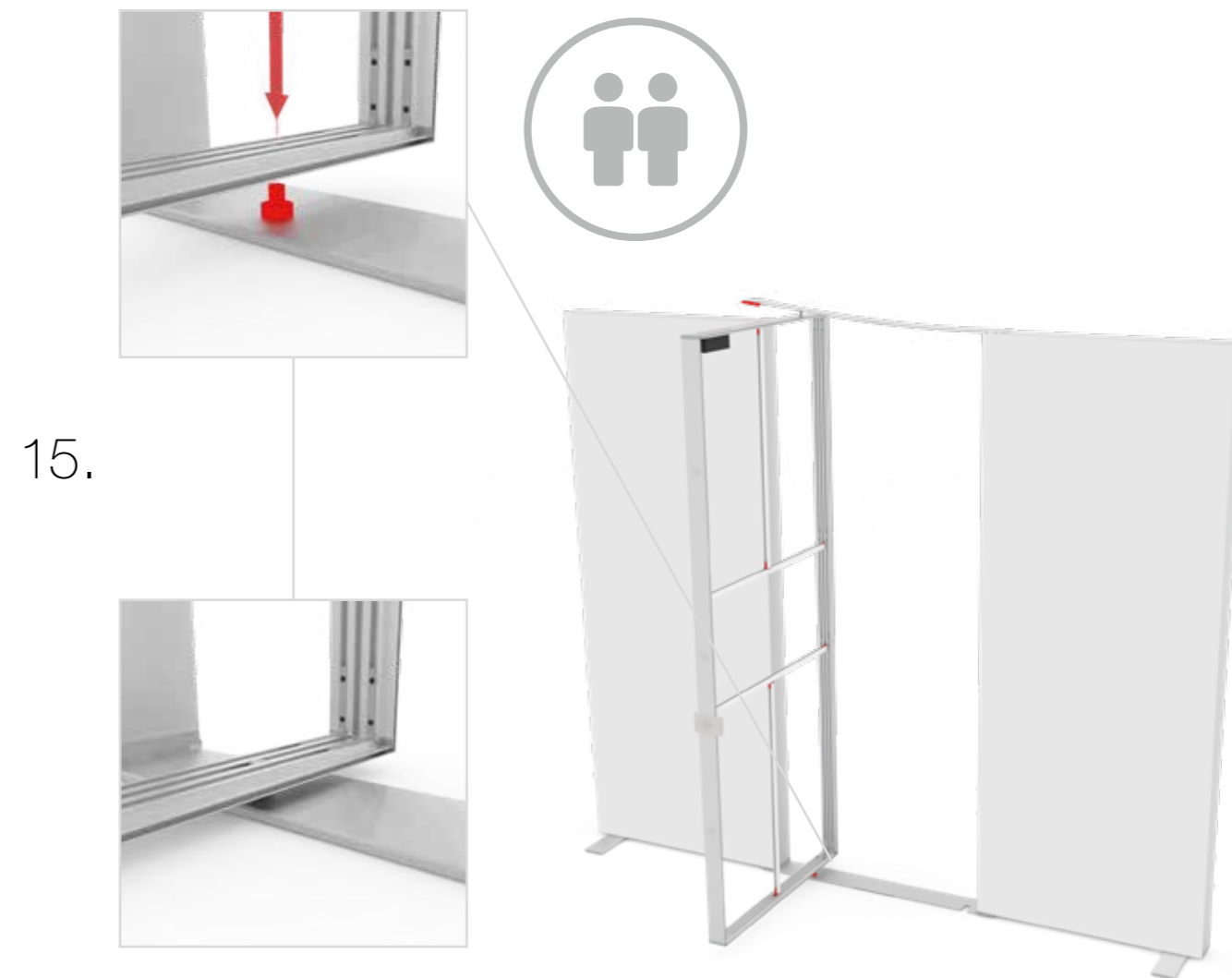
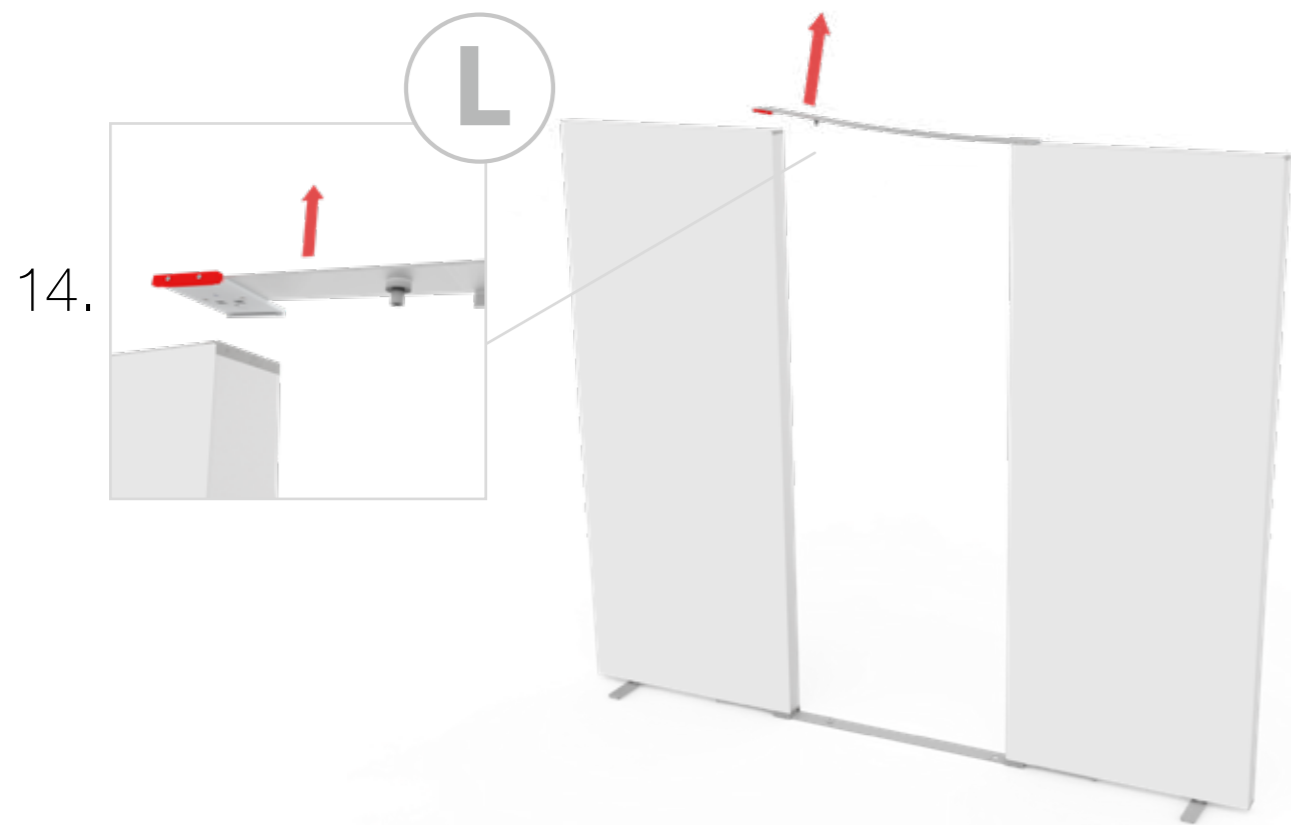
STRAIGHT VARIANT



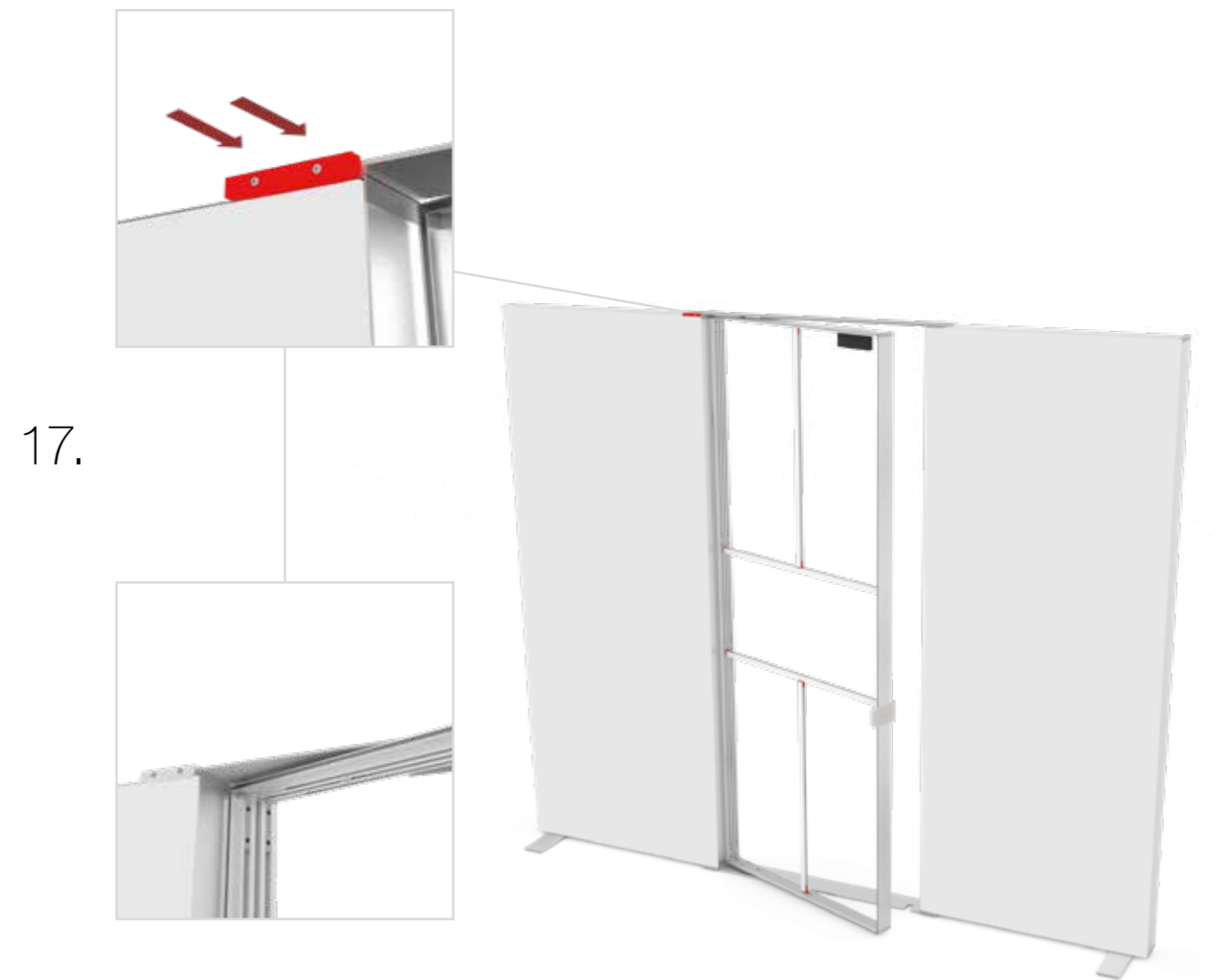
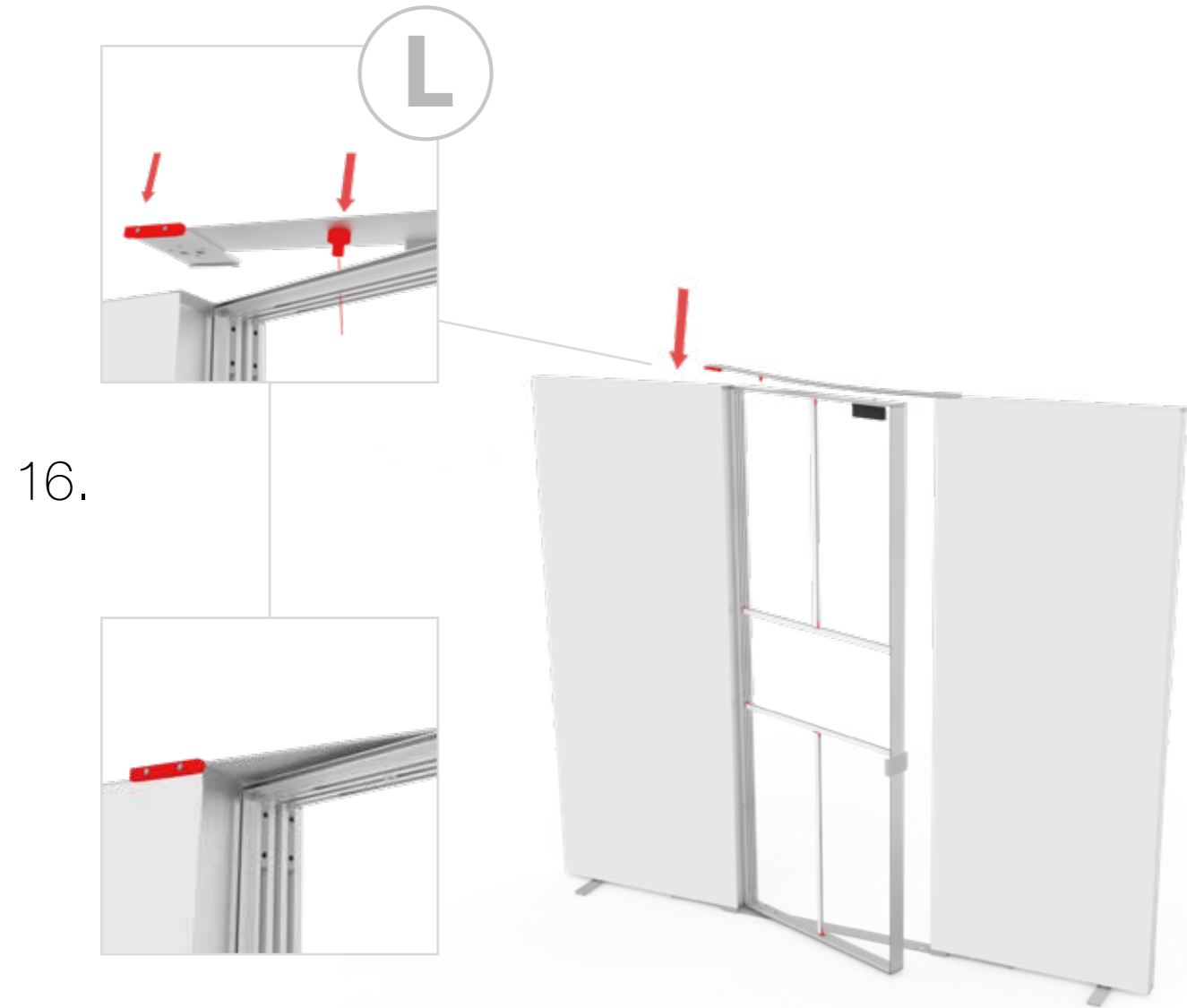
STRAIGHT VARIANT



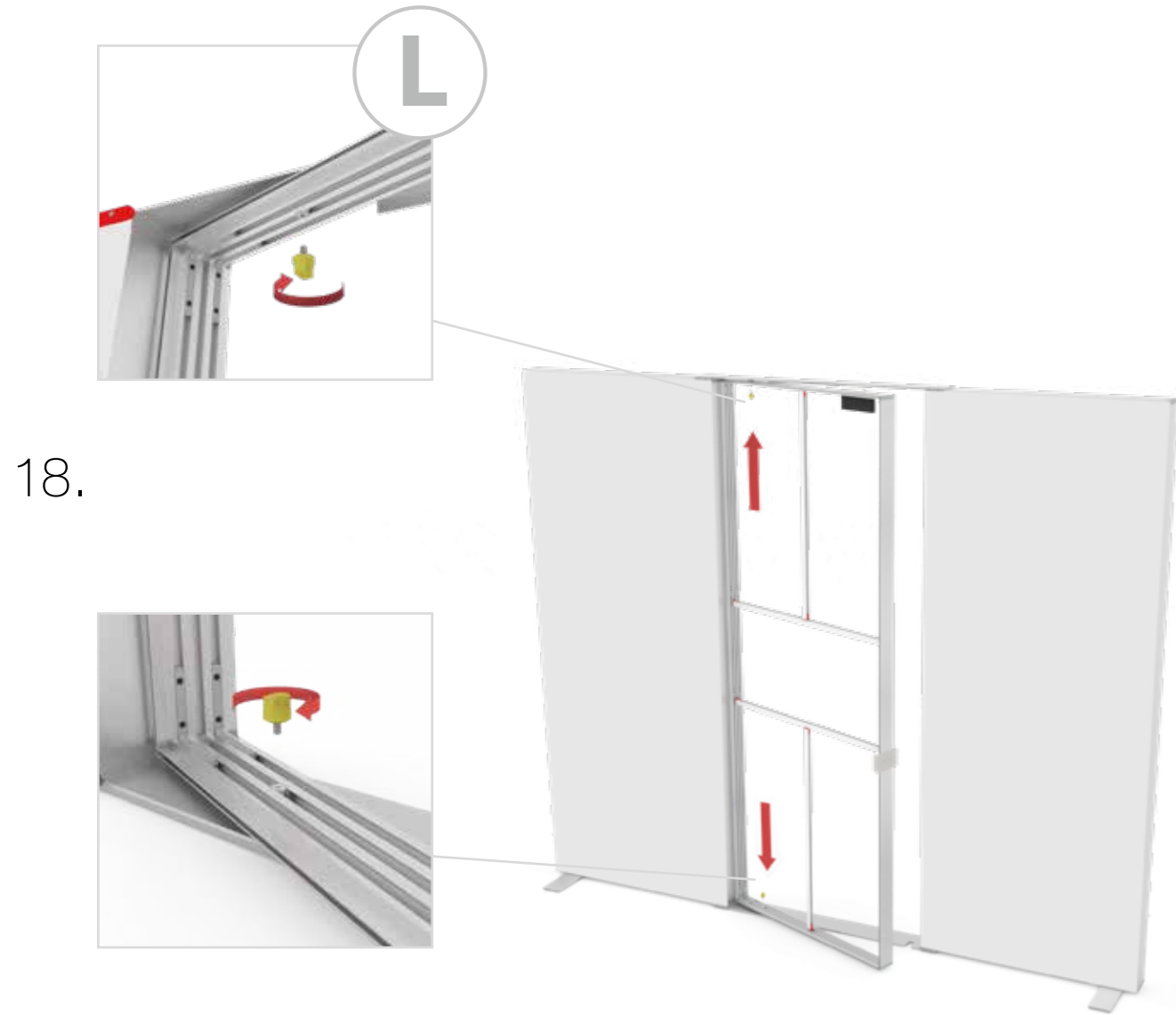
STRAIGHT VARIANT



STRAIGHT VARIANT



STRAIGHT VARIANT

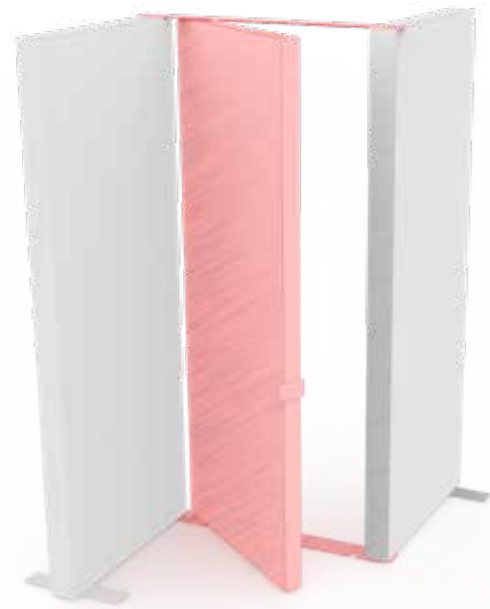


SRAIGHT VARIANT



PRESS FOR 2 SEC.

CORNER & STORAGE ROOM VARIANT



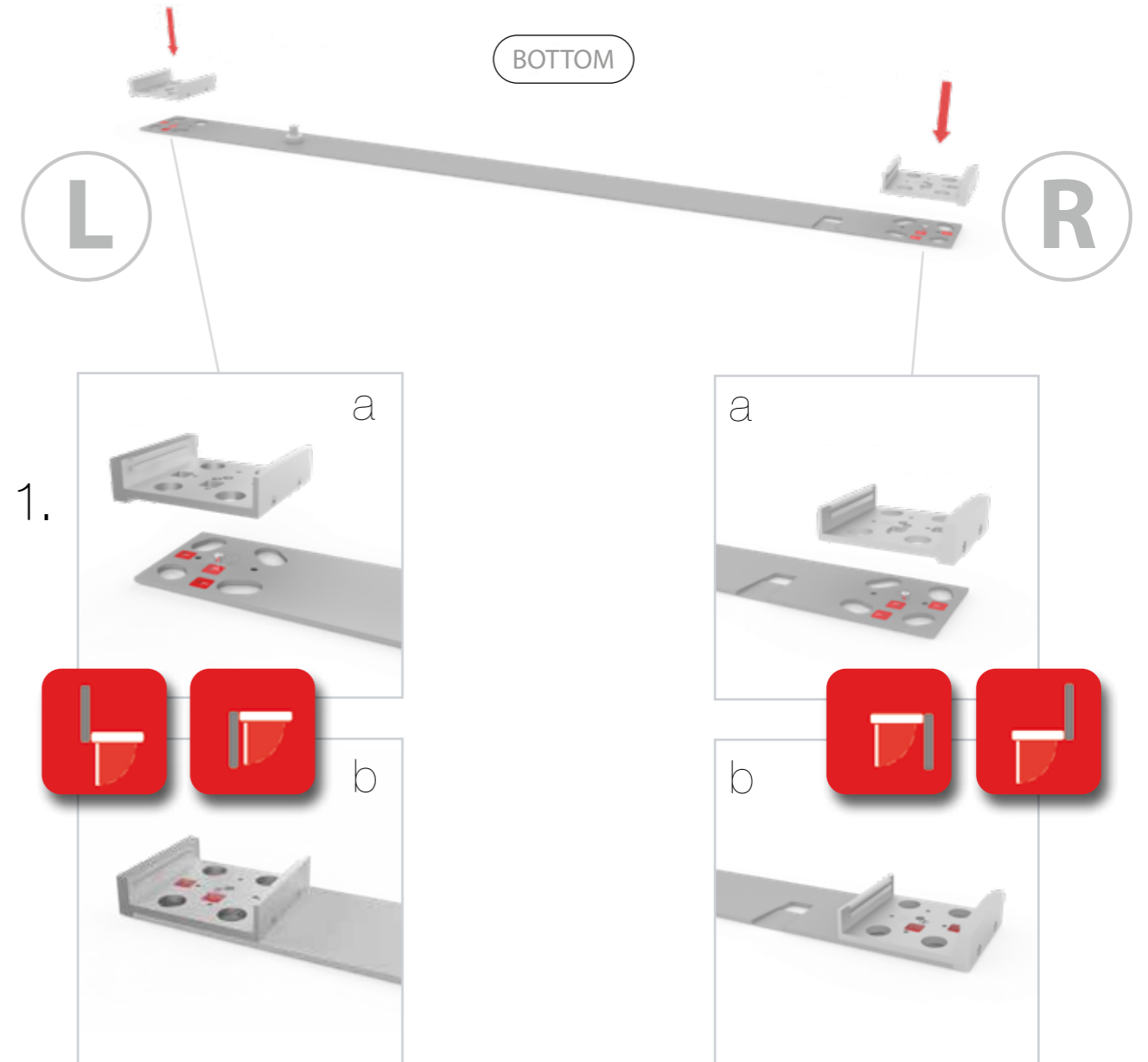
corner-L

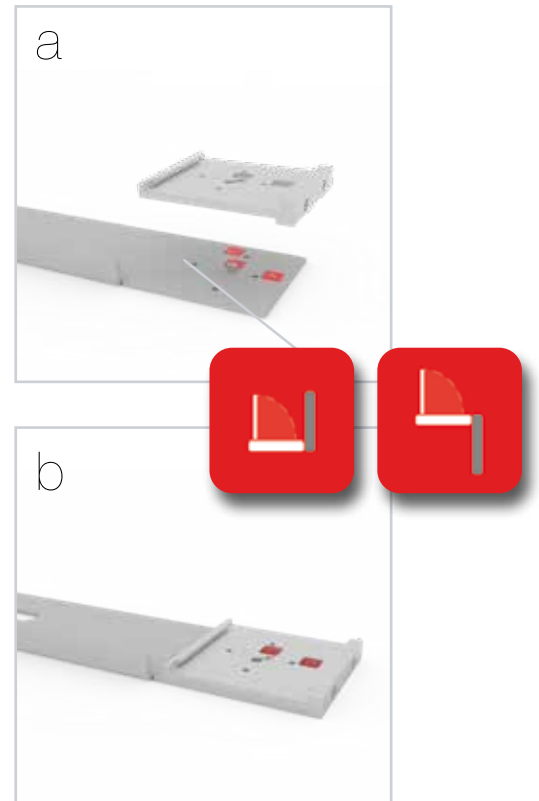
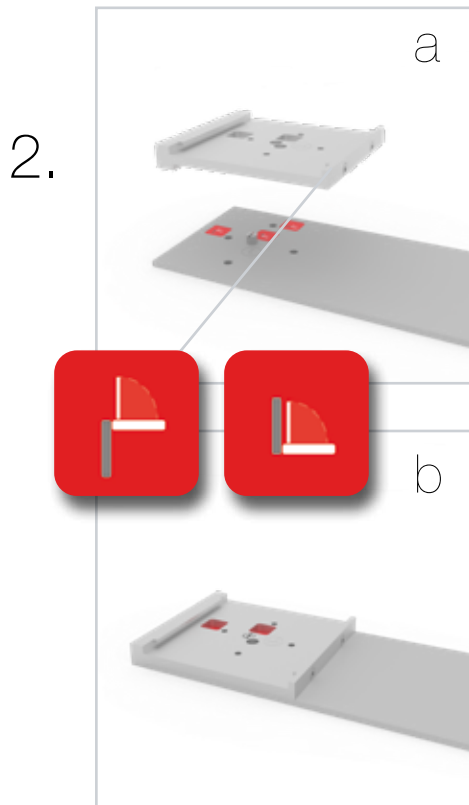


corner-R



storage room







MARTINCOLOR
BILDKOMMUNIKATION

MARTINCOLOR GmbH & Co. KG
Gaugrafenstraße 24 d | 60489 Frankfurt am Main
Telefon 069 756080-0 | info@martincolor.de

www.martincolor.de